

Executive Summary

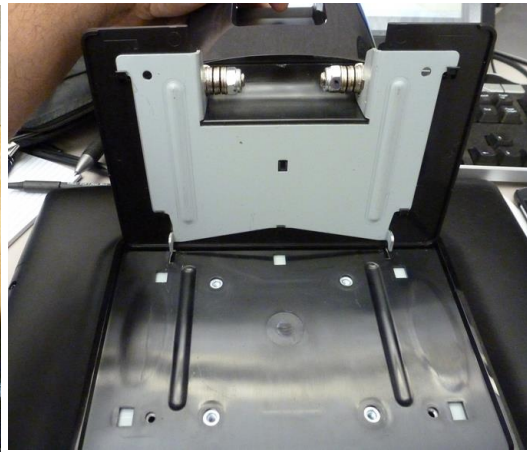
This Tech Bulletin describes how to disassemble the 1517L/1517L desktop touchmonitor.

Tools Needed

#2 Philipps Screwdriver

Steps

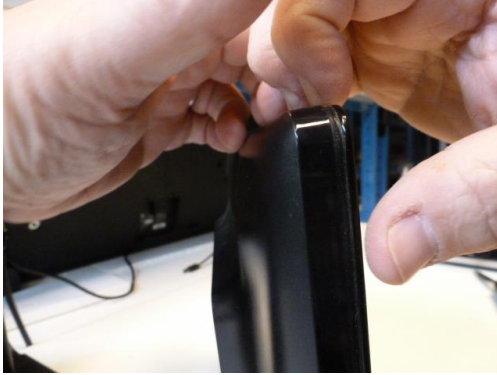
1. Place the 1517L/1717L monitor face down on a work bench with a protective surface.
2. Remove the two Philipps head screws and lift up on the stand to remove stand.



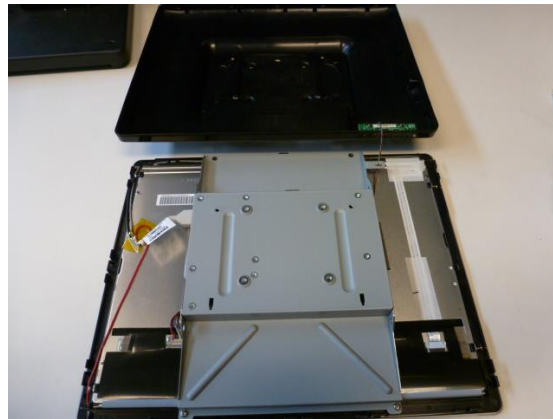
3. Remove the two Philipps head screws at bottom of monitor.



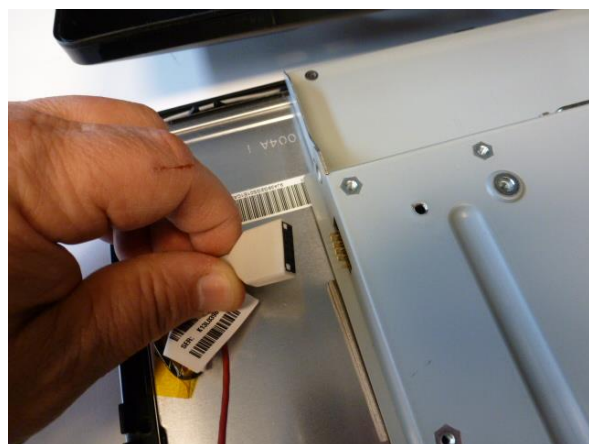
4. Use fingers to gently pry monitor apart (be cautious when monitor separates that you do not pull any wires loose).



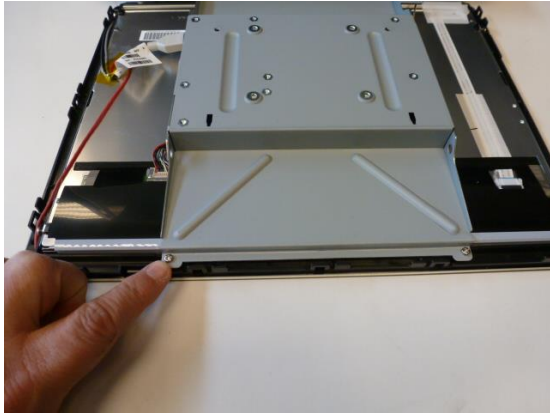
5. Separate the two halves, making sure not to pull wires loose from circuit board on plastic back.



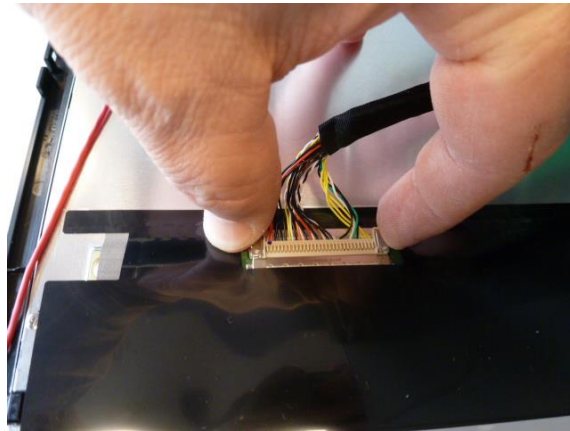
6. Disconnect touch screen cable connector from controller board.



7. Remove the two Philips head screws from metal plate and lift plate up.



8. Remove the LCD header connector by pressing in the two sides to release, then pull back to remove connector.



9. The two sections are now separated, and you can remove any components needed.



10. Reassemble parts by reversing the steps taken to disassemble. Pay particular attention to the rubber sealing gasket and make sure it is placed in the channel properly before reassembling.

