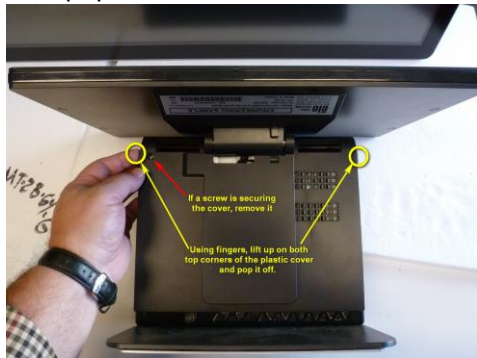


Executive Summary

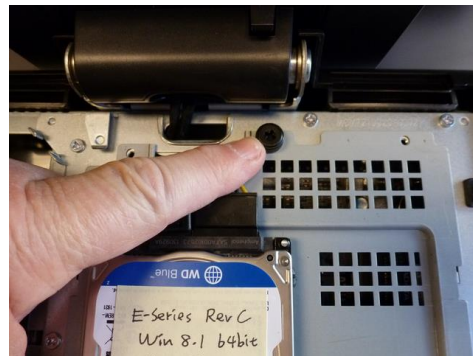
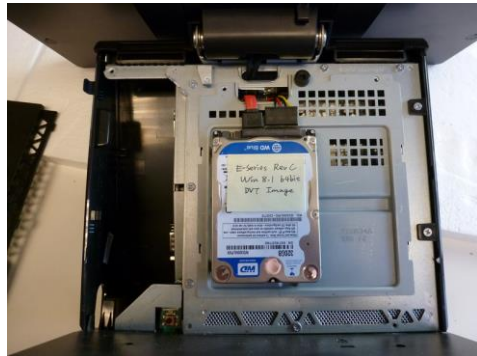
This Technical Bulletin describes how to access and remove the HDD on the E-Series AIO products

Steps

1. Tilt video head backwards and lay the unit down on a work surface with the backside down.
2. If there is a set screw holding the plastic cover on, remove the screw.
3. Using fingers, grasp the tabs on both upper corners of the plastic cover and pull upward allowing the cover to “pop” off.



4. The HDD will be visible. Remove the black set screw to gain access to the back of the HDD panel.



5. Push in the upward direction to release the HDD cover.
 - a. Remove the 4 screws on the backside of the HDD cover to remove the HDD.

