

Executive Summary

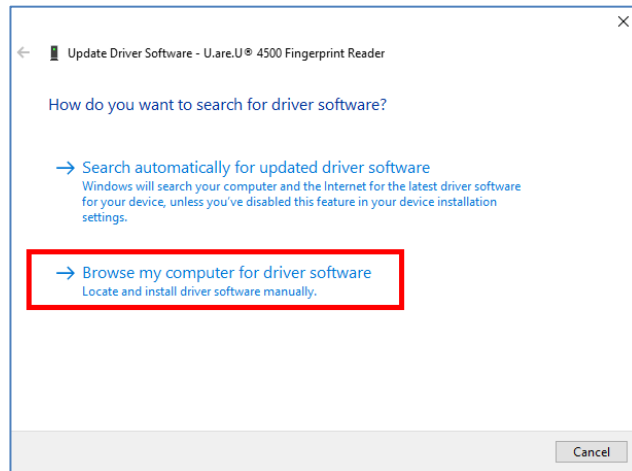
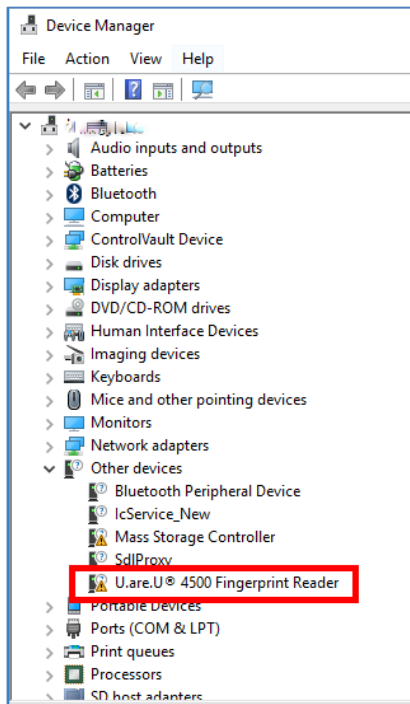
This technical bulletin describes how to and setup the Elo Bio-Metric Fingerprint Reader (FPR) on a Windows 10 64bit Operating System to use the [Windows Hello service](#).

Tools & Software Needed

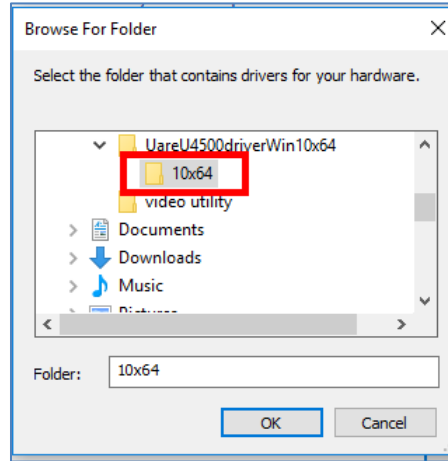
- Elo Fingerprint Reader, P/N: E001001
- Windows 10 Operating System 64bit with Windows Hello Support
- Crossmatch/Digital Persona U.are.U© 4500 Fingerprint Reader (WBF) for 64bit, version 5.0.0.5:
https://elotouch.sharepoint.com/:u:/s/KnoxvilleTechnicalServices/EcY8zTwdPipGtIFs_egoypkBBf-nqslIj-VpMN1IfkECbg?e=uEhsl

Procedure

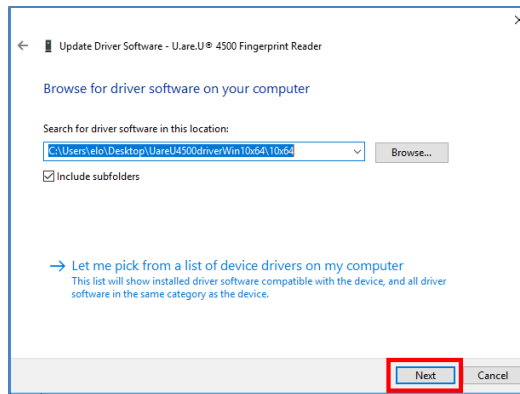
1. Download the Crossmatch/Digital Persona U.are.U© 4500 Fingerprint Reader (WBF) for 64bit, version 5.0.0.5 and extract it to a folder on the desktop.
2. Connect the Elo FPR to the Windows 10 64bit computer.
 - a. If Windows tries to automatically install drivers, cancel the Windows hardware wizard. We do not want Windows to install the driver automatically.
3. Go into Windows Device Manager and find the U.are.U 4500 Fingerprint Reader. It should be under the **“Other Devices”** section.
 - a. Right click on the entry and choose **“Update Driver”**
 - b. Choose **“Browse my computer for driver software”**



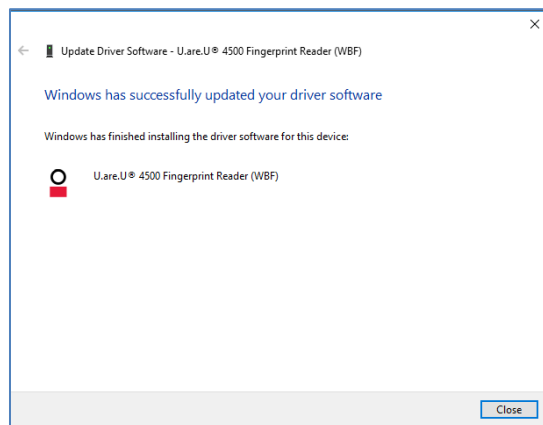
- c. Navigate to the folder on the desktop where you unzipped the driver package.
 - i. Find the 10x64 folder and choose **“OK”**



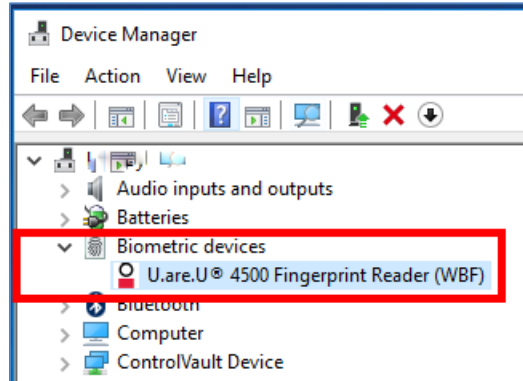
- d. Choose **“Next”**



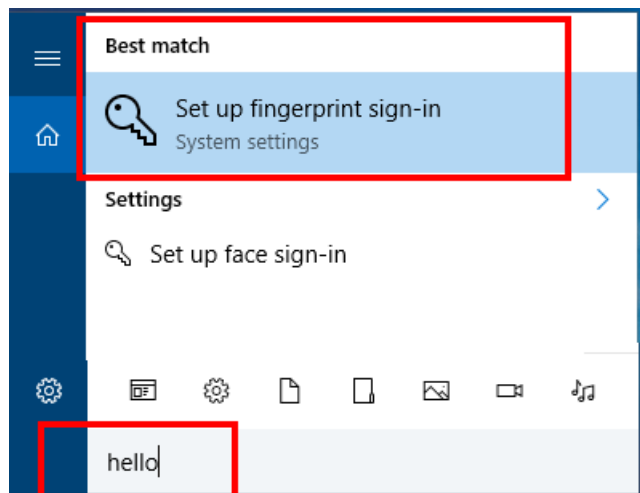
- e. The driver will install. When finished, choose **“Close”**



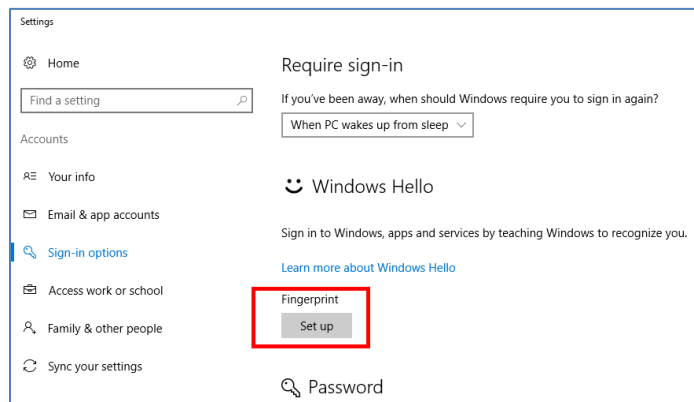
4. You can now go back into Windows Device Manager and see the updated entry for the Fingerprint Reader.



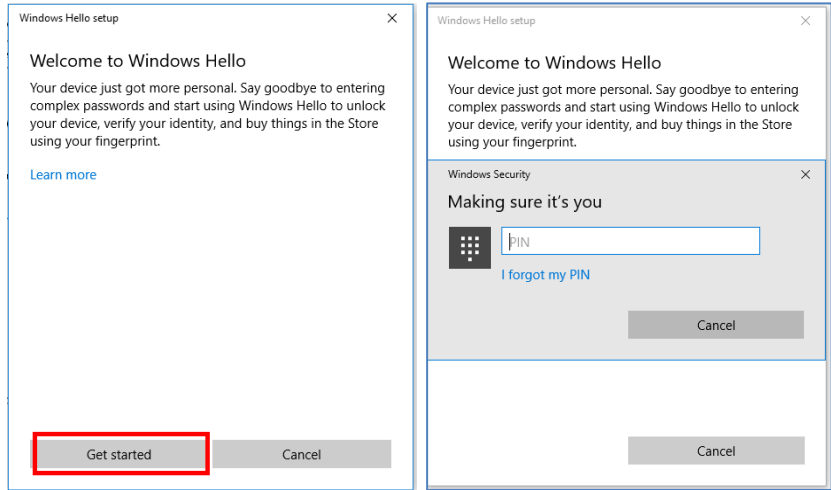
5. Type in the word "Hello" in the Windows Search box and choose "Set up fingerprint sign-in"



6. Scroll down to "Fingerprint" and choose "Set up"



- 7. Choose **“Get started”**
 - a. You will need to enter your **PIN Number** to continue



- 8. Follow the directions on the screen as they appear. When completed you will receive an **“All set!”** message. You can then close the utility and begin using your FPR to sign in to your computer using Windows Hello.

