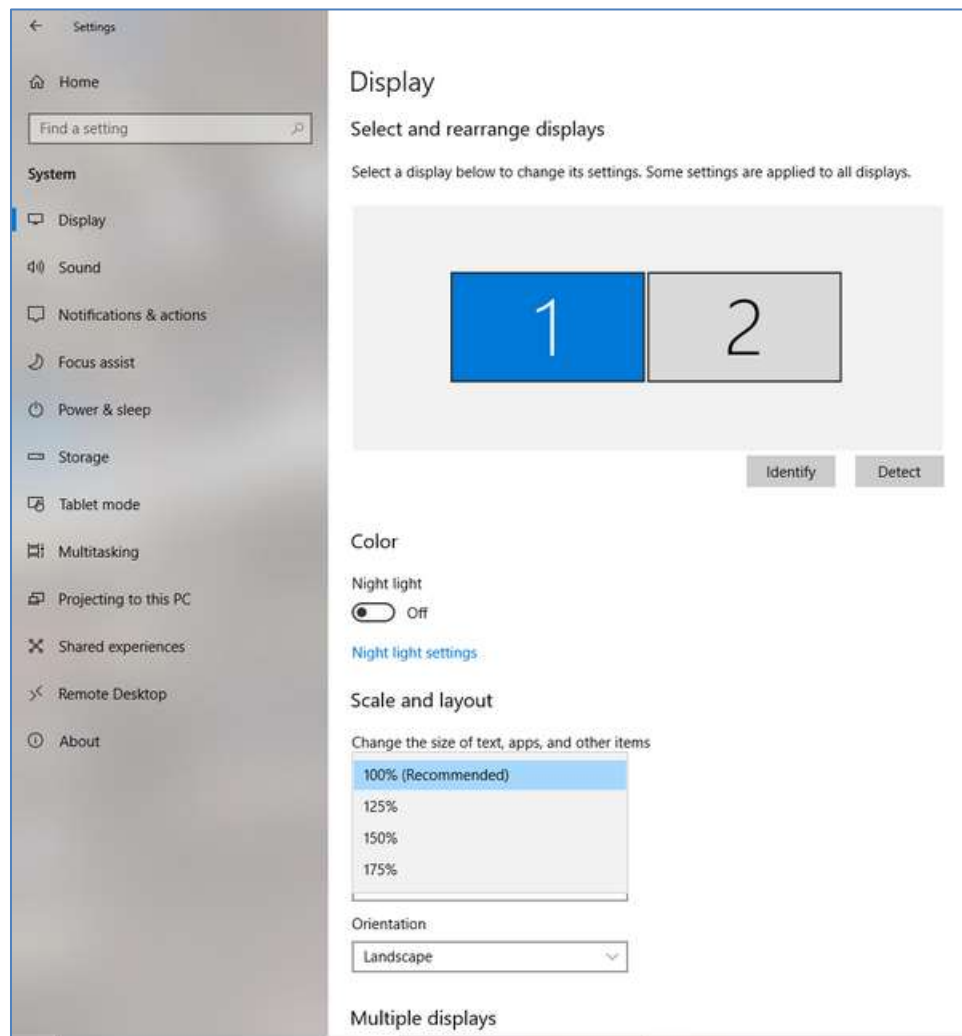


**Executive Summary**

Windows 10 has individual display scaling capabilities. If a customer changes the scaling through these settings, there may be issues when trying to calibrate the touchscreen. This tech bulletin describes the settings and what to do if an issue arises.

**Process:**

1. Windows 10 Display Scaling is accessed here: **Start > Settings > System > Display > Scale and layout**



2. If the above settings are increased, there is a potential of the touch calibration targets showing off position. If this happens the customer would need to go into the above settings and set to 100% and then try aligning the touchscreen.