

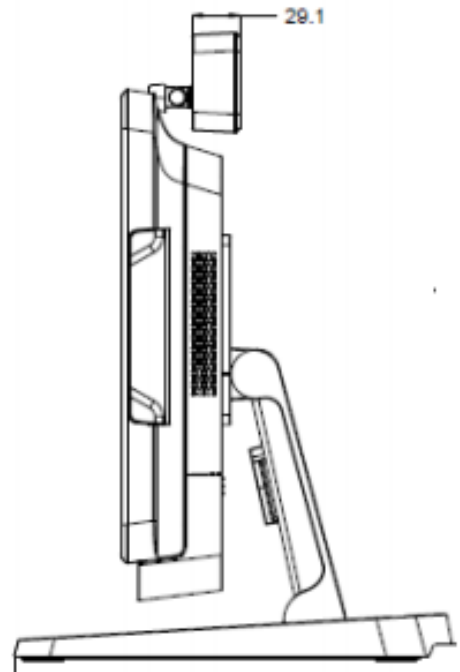
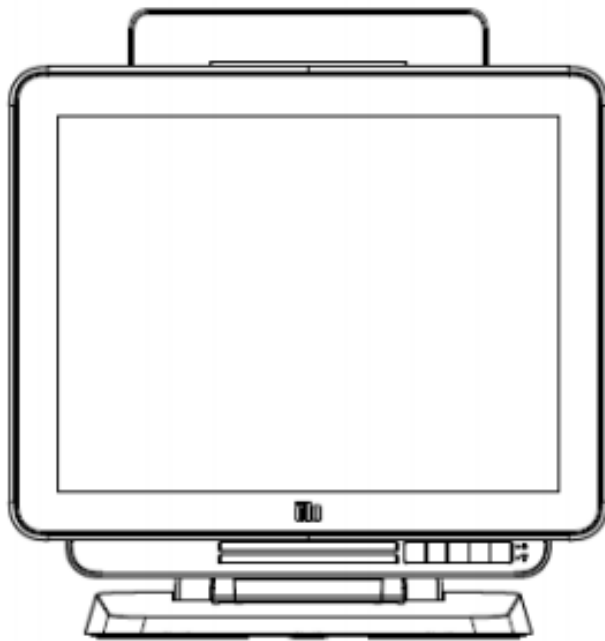


Elo Touch Solutions

X-Series Wi-Fi adapter removal/replacement

TSXXXXXX Rev A

Solutions Architect of Technical Services



No part of this publication may be reproduced, transmitted, transcribed, stored in a retrieval system, or translated into any language or computer language, in any form or by any means, including, but not limited to, electronic, magnetic, optical, chemical, manual, or otherwise without prior written permission of Elo Touch Solutions, Inc.

Disclaimer

The information in this document is subject to change without notice. Elo Touch Solutions, Inc. and its affiliates (collectively "Elo") makes no representations or warranties with respect to the contents herein, and specifically disclaims any implied warranties of merchantability or fitness for a particular purpose. Elo reserves the right to revise this publication and to make changes from time to time in the content hereof without obligation of Elo to notify any person of such revisions or changes.

Trademark Acknowledgments

AccuTouch, CarrollTouch, Elo, Elo (logo), Elo Touch, Elo Touch Solutions, Elo TouchSystems, IntelliTouch, iTouch, SecureTouch, TouchTools and VuPoint are trademarks of Elo and its affiliates. Windows is a trademark of Microsoft Corporation.

Table of Contents

Introduction 4

Tools Needed 5

Procedure 6

About This Manual

This document guides the user through removing/replacing the Wi-Fi adapter on the Elo X-Series AIO touchcomputer.

The intended audience of this document includes: IT engineers, system engineers, electrical engineers, and end-users.

If after reading through this guide, you still have questions or need help getting your system up and running, please contact an Elo Touch Solutions Technical Representative. www.elotouch.com

Tools Needed

The following hardware that is needed:

Hardware:

- Flat protective surface
- Elo X-Series AIO Touchcomputer
- Small Philipps Screwdriver
- Electrical tape (if not replacing Wi-Fi adapter)
- Replacement Wi-Fi adapter (if replacing)

Procedure

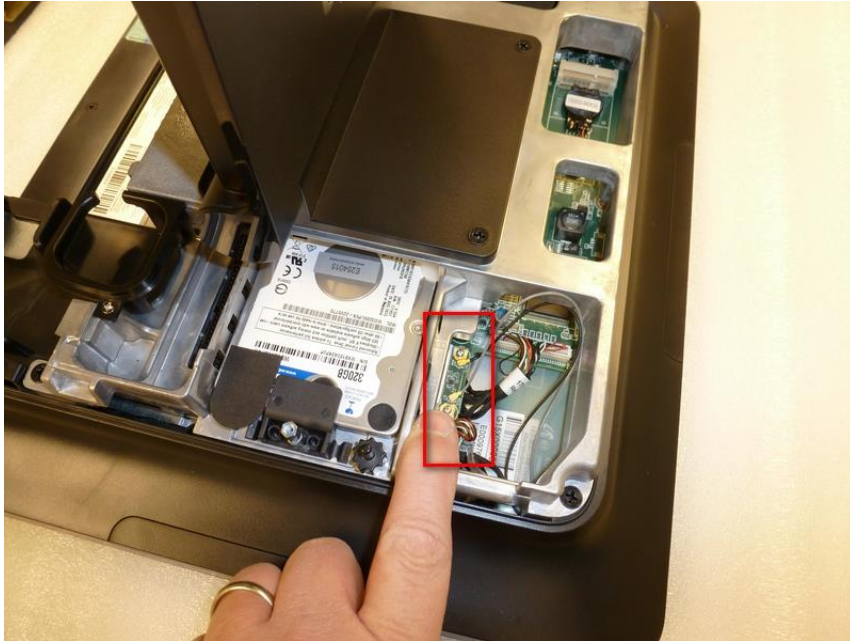
1. Place X-Series face down on a flat protective surface.



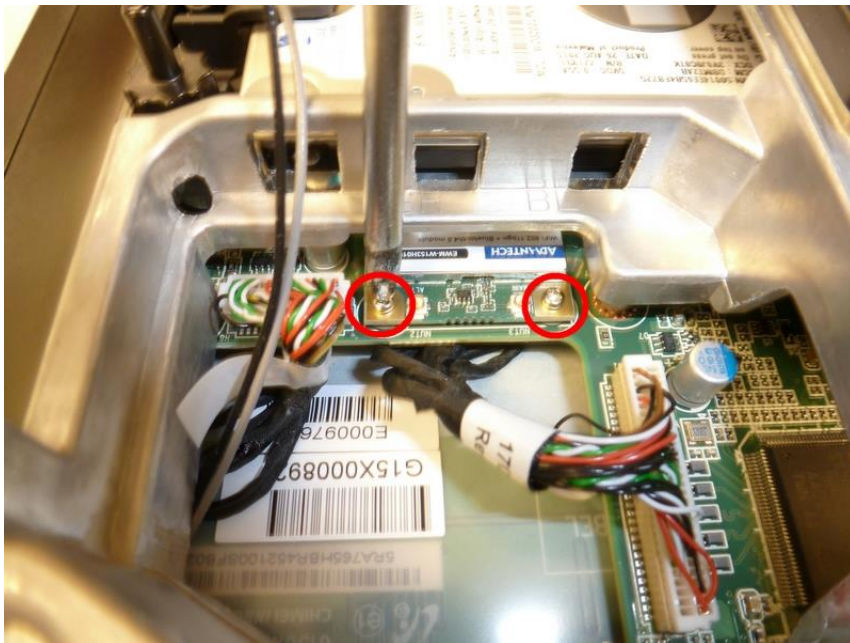
2. Using fingers pull up on the two tabs on the bottom of the back cover and push up and forward to remove the cover.



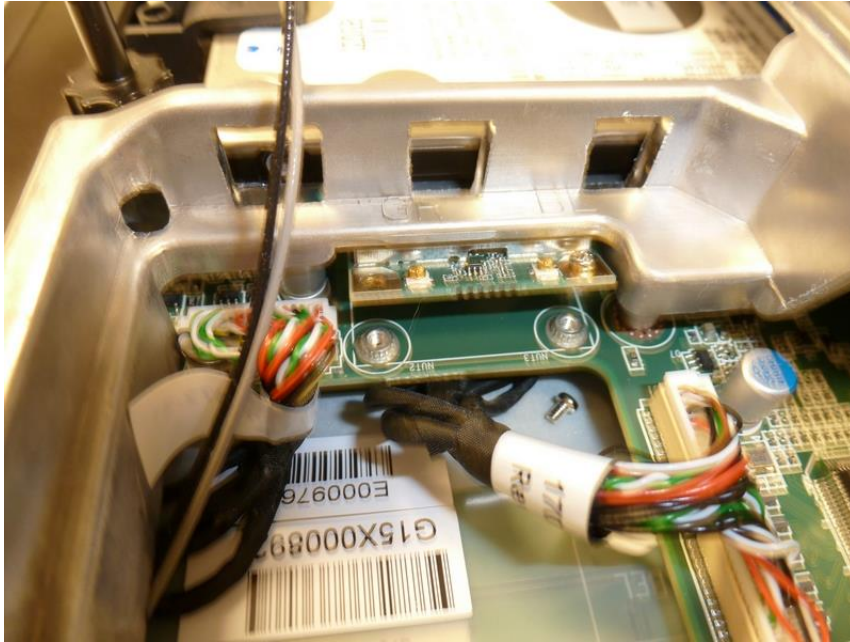
3. Locate Wi-Fi adapter in upper right corner of unit (see picture below) and pull the black and grey antenna wires off of the adapter.



4. Using a small Philipp's screwdriver, remove the two screws that secure the Wi-Fi adapter.



5. Once the two screws are removed the Wi-Fi adapter will lift upwards.



6. Using your fingers, remove the Wi-Fi adapter out of the unit.



7. If you are not going to be replacing the Wi-Fi adapter, wrap the antenna connectors with electrical tape to prevent any accidental electrical shorts. If replacing the Wi-Fi adapter, slide the new adapter into the slot and reassemble in the reverse steps as disassembled.



8. Replace back cover and you are finished.



Check out our website

www.elotouch.com

Get the latest...

- Product Information
- Specifications
- Upcoming events
- Press releases
- Software drivers

Getting in Touch with Us

To find out more about the extensive range of Elo touch solutions, visit our website at www.elotouch.com, or simply call the office nearest you:

North America
Elo Touch Solutions
1033 McCarthy Blvd
Milpitas, CA 95035

Tel 800-ELO-TOUCH
Tel + 1 408 597 8000
Fax +1 408 597 8050
customerservice@elotouch.com

Europe
Tel +32 (0) 16 70 45 00
Fax +32 (0)16 70 45 49
elosales@elotouch.com

Asia-Pacific
Tel +86 (21) 6106 7162
Fax +86 (21) 6485 3981
www.elotouch.com.cn

Latin America
Tel 786-923-0251
Fax 305-931-0124
www.elotouch.com