



Elo Touch Solutions

Wireless Card Replacement on the Elo Tablet (WiFi/Bluetooth Adapter)

TSXXXXXX Rev A

Byron Chesney, Solutions Architect of Technical Services



No part of this publication may be reproduced, transmitted, transcribed, stored in a retrieval system, or translated into any language or computer language, in any form or by any means, including, but not limited to, electronic, magnetic, optical, chemical, manual, or otherwise without prior written permission of Elo Touch Solutions, Inc.

Disclaimer

The information in this document is subject to change without notice. Elo Touch Solutions, Inc. and its affiliates (collectively "Elo") makes no representations or warranties with respect to the contents herein, and specifically disclaims any implied warranties of merchantability or fitness for a particular purpose. Elo reserves the right to revise this publication and to make changes from time to time in the content hereof without obligation of Elo to notify any person of such revisions or changes.

Trademark Acknowledgments

AccuTouch, CarrollTouch, Elo, Elo (logo), Elo Touch, Elo Touch Solutions, Elo TouchSystems, IntelliTouch, iTouch, SecureTouch, TouchTools and VuPoint are trademarks of Elo and its affiliates. Windows is a trademark of Microsoft Corporation.

Table of Contents

Introduction 4

Tools Needed 5

Procedure 6

About This Manual

This document guides the user through the successful replacement of the Wireless card on an Elo Tablet.

The intended audience of this document includes: IT engineers, system engineers, electrical engineers, and end-users.

If after reading through this guide, you still have questions or need help getting your system up and running, please contact an Elo Touch Solutions Technical Representative. www.elotouch.com

Tools Needed

The following hardware and software is needed to replace the RAM on the Elo Tablet.

Hardware:

- 1- Elo Tablet
- 1- Compatible Wireless Card: Mini PCIe half-size wireless card.
- 1- Replacement internal antennas that will support up to 5Ghz cards.
- 1- #2 sized Phillips screwdriver
- 1- #1 sized Phillips screwdriver
- 1- Small flat blade screwdriver (optional for step 9.)

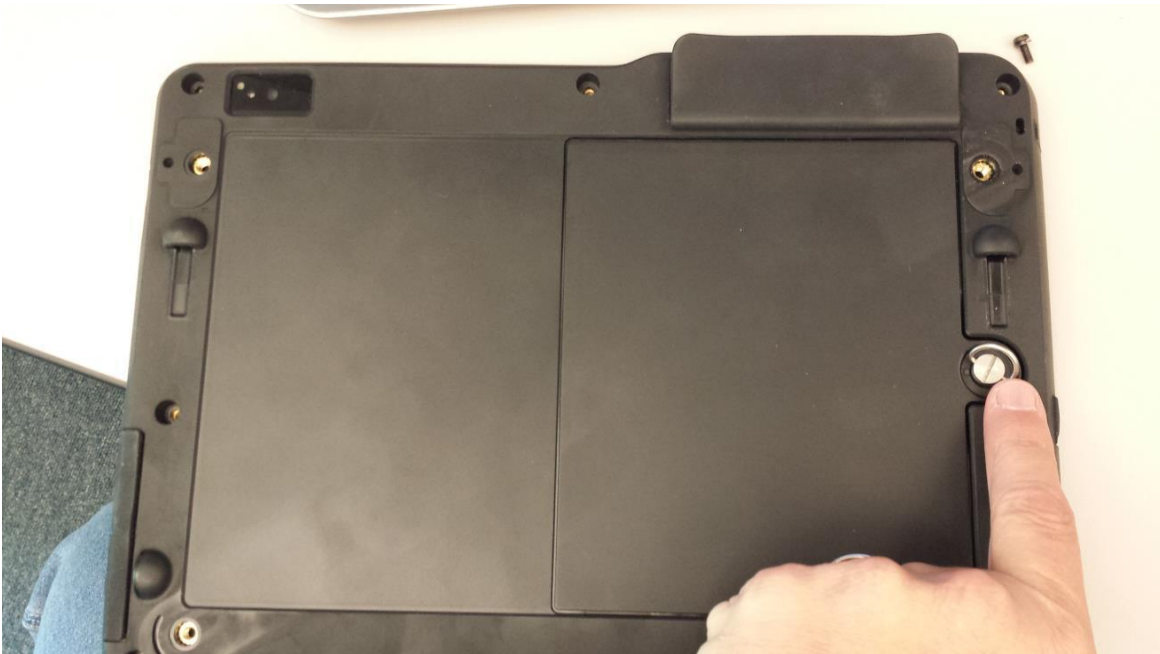
Procedure

Disassembly of Tablet

1. Lay Tablet face down on a flat protective surface.
2. Remove the two thumb screws which secure the handstrap.



3. Remove the thumbscrew which secures the battery, and remove the battery.



4. Using the #2 Phillips screwdriver, remove the 8 screws that secure the Tablet.



5. With your fingers, carefully pry apart the two halves of the Tablet, start at the top of the Tablet.



6. Carefully pull the antenna leads off of the card:

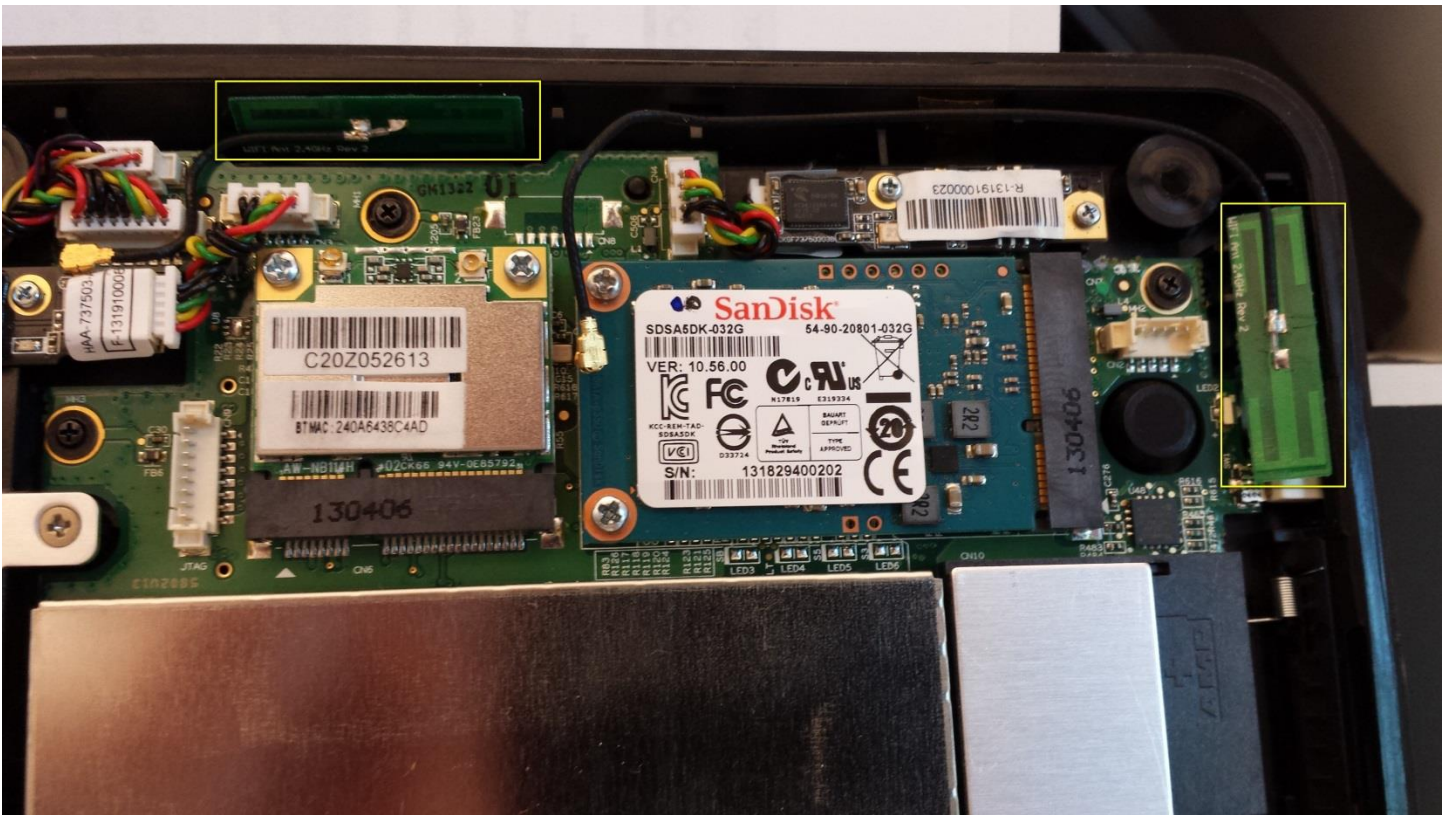


7. Using the #1 Phillips screwdriver, remove the two screws that hold the card in and remove card.



8. Install the new wireless card in the reverse method.

9. Install the new wireless antennas making certain to tuck wires out of the way of any screw holes or other places they may interfere with reassembly. You can wrap the old antenna leads with electrical tape to prevent them from shorting against any internal components, or you can remove the old antenna receivers. The antenna receivers are held on with double sided tape. You can easily pry them away from the tablet with a small flat blade screwdriver.



10. Reassemble the Tablet in the reverse method that it was disassembled in.

Check out our website

www.elotouch.com

Get the latest...

- Product Information
- Specifications
- Upcoming events
- Press releases
- Software drivers

Getting in Touch with Us

To find out more about the extensive range of Elo touch solutions, visit our website at www.elotouch.com, or simply call the office nearest you:

North America
Elo Touch Solutions
1033 McCarthy Blvd
Milpitas, CA 95035

Tel 800-ELO-TOUCH
Tel + 1 408 597 8000
Fax +1 408 597 8050
customerservice@elotouch.com

Europe
Tel +32 (0) 16 70 45 00
Fax +32 (0)16 70 45 49
elosales@elotouch.com

Asia-Pacific
Tel +86 (21) 6106 7162
Fax +86 (21) 6485 3981
www.elotouch.com.cn

Latin America
Tel 786-923-0251
Fax 305-931-0124
www.elotouch.co