

How to find Mac address on AiO and ECM computers

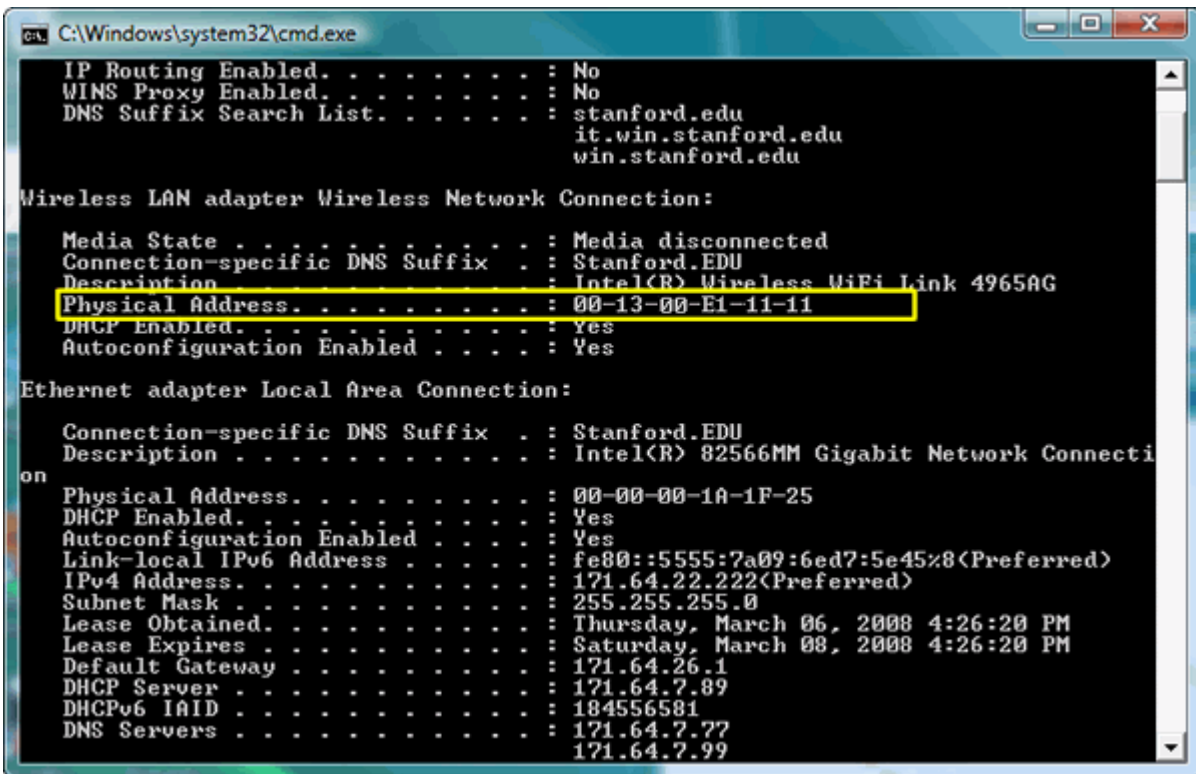


By Byron Chesney
Solutions Architect

Elo Touch Solutions

May 30, 2013

This document explains how to find the Mac address on an Elo AiO touchcomputer.



Hardware/Software needed:

1. Elo AiO touchcomputer or ECM module running Windows XP/Vista/Windows 7/ Windows 8
2. Keyboard

[Windows XP](#)

[Windows Vista/ Windows 7](#)

[Windows 8](#)



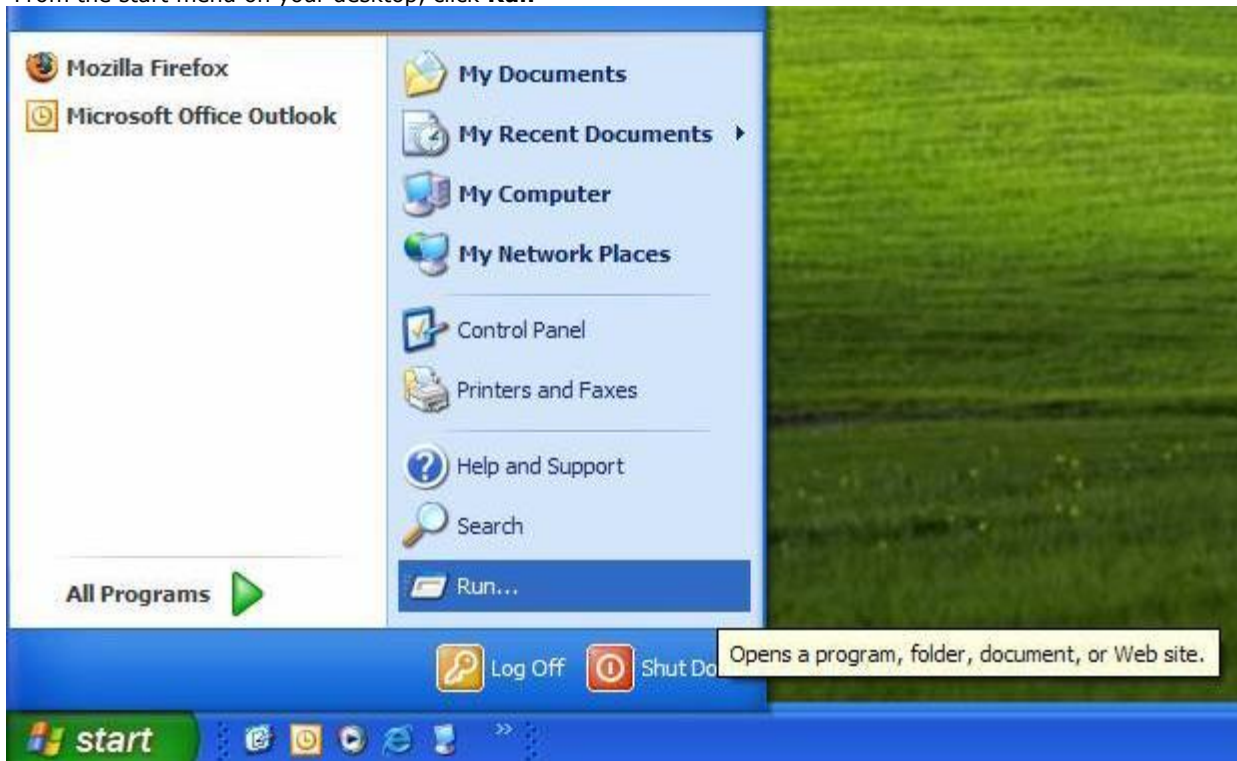
How to find a Mac Address

Procedure

Windows XP / Windows 2000

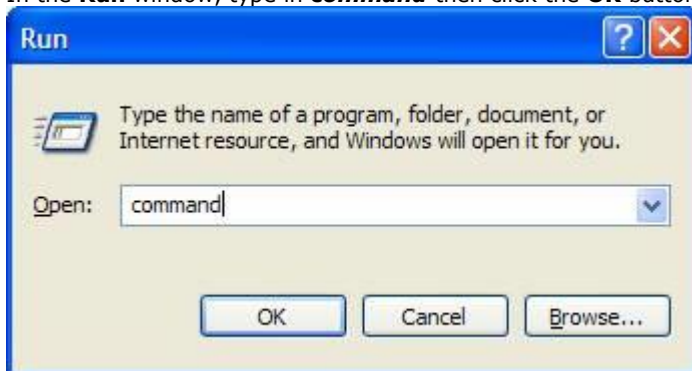
Step 1: Open a command (cmd) window

- From the start menu on your desktop, click **Run**



- Step 2 of 4: A **Run** window should appear on your screen.

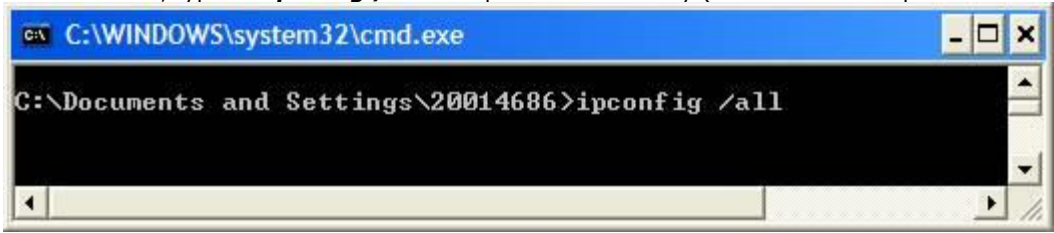
In the **Run** window, type in **command** then click the **OK** button.



How to find a Mac Address

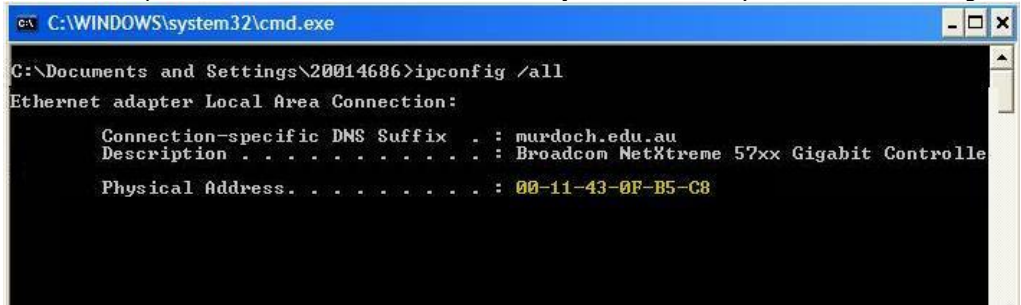
- Step 3 of 4: A **command** window should now appear.

In this window, type in ' **ipconfig /all** ' and press the enter key (notice there is a space between the **g** and the **/**)



- Step 4 of 4: Information about your network settings will now be displayed.

You can find your MAC address next to the label **Physical Address** (as shown in the image below).



You have found your MAC address - close the command window.

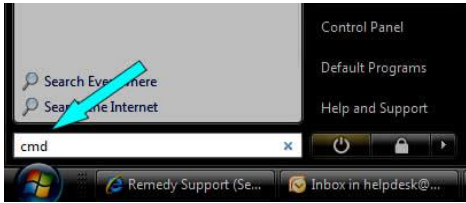
How to find a Mac Address

Windows Vista / Windows 7

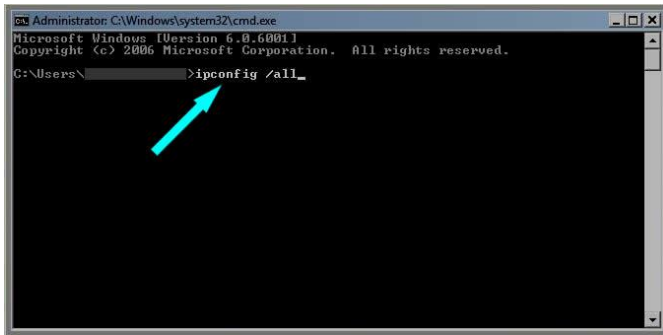
NOTE: These instructions apply to both Windows Vista and Windows 7.

Step 1: Open cmd

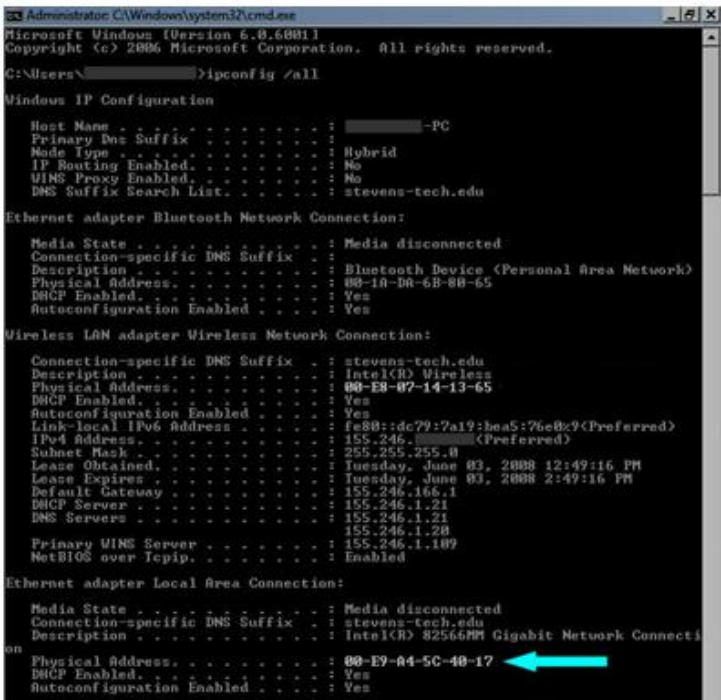
- Type **cmd** into the find input box (this input also doubles as the typical run dialog if you press enter) and press enter.



- Type **ipconfig /all** to display information about your network adapters.



- The physical (MAC) address is shown below

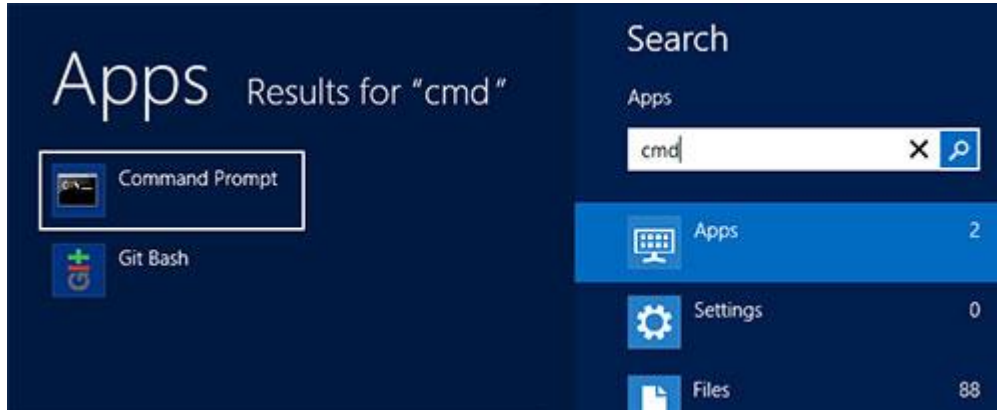


How to find a Mac Address

Windows 8

Step 1: Open cmd

- Open the Start screen (Metro desktop) by pressing the Windows button on the keyboard or go down to the left bottom corner and click.
- Type in "cmd" and press Enter, then you will open Command prompt.



- A black command prompt window opens where you type "ipconfig /all" (without the quotations marks and with a space between ipconfig and the slash) and click Enter. Find the row which says "Physical address". This is the MAC address.

