



# Elo Touch Solutions

## E-Series RAM removal/replacement

TSXXXXXX Rev A

Solutions Architect of Technical Services



No part of this publication may be reproduced, transmitted, transcribed, stored in a retrieval system, or translated into any language or computer language, in any form or by any means, including, but not limited to, electronic, magnetic, optical, chemical, manual, or otherwise without prior written permission of Elo Touch Solutions, Inc.

### **Disclaimer**

The information in this document is subject to change without notice. Elo Touch Solutions, Inc. and its affiliates (collectively "Elo") makes no representations or warranties with respect to the contents herein, and specifically disclaims any implied warranties of merchantability or fitness for a particular purpose. Elo reserves the right to revise this publication and to make changes from time to time in the content hereof without obligation of Elo to notify any person of such revisions or changes.

### **Trademark Acknowledgments**

AccuTouch, CarrollTouch, Elo, Elo (logo), Elo Touch, Elo Touch Solutions, Elo TouchSystems, IntelliTouch, iTouch, SecureTouch, TouchTools and VuPoint are trademarks of Elo and its affiliates. Windows is a trademark of Microsoft Corporation.

# Table of Contents

**Introduction ..... 4**

**Tools Needed ..... 5**

**Procedure ..... 6**

# About This Manual

---

This document guides the user through removing/replacing the RAM on the Elo E-Series AIO touchcomputer.

The intended audience of this document includes: IT engineers, system engineers, electrical engineers, and end-users.

If after reading through this guide, you still have questions or need help getting your system up and running, please contact an Elo Touch Solutions Technical Representative. [www.elotouch.com](http://www.elotouch.com)

# Tools Needed

---

The following hardware is needed:

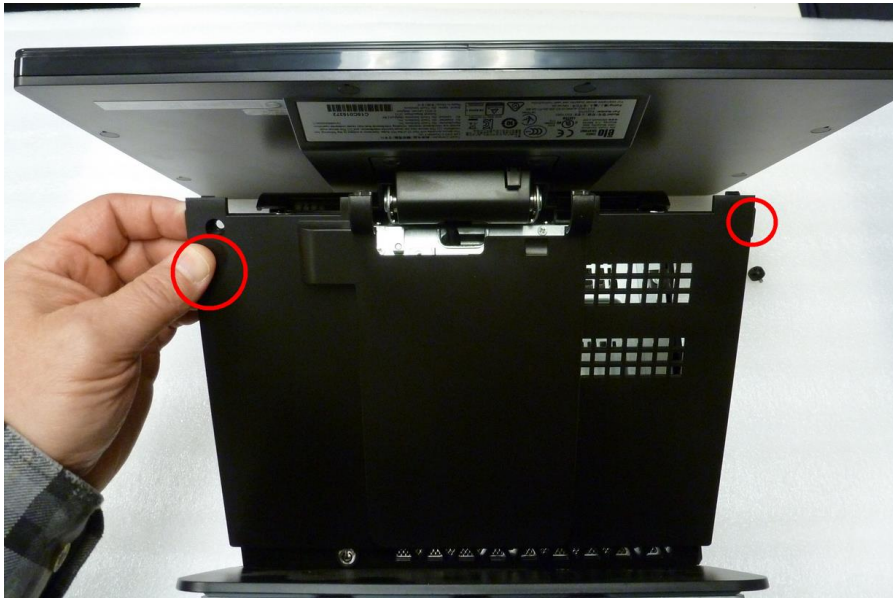
## Hardware:

- Flat protective surface
- Elo E-Series AIO Touchcomputer
- Small Philipps Screwdriver
- Replacement RAM module

# Procedure

---

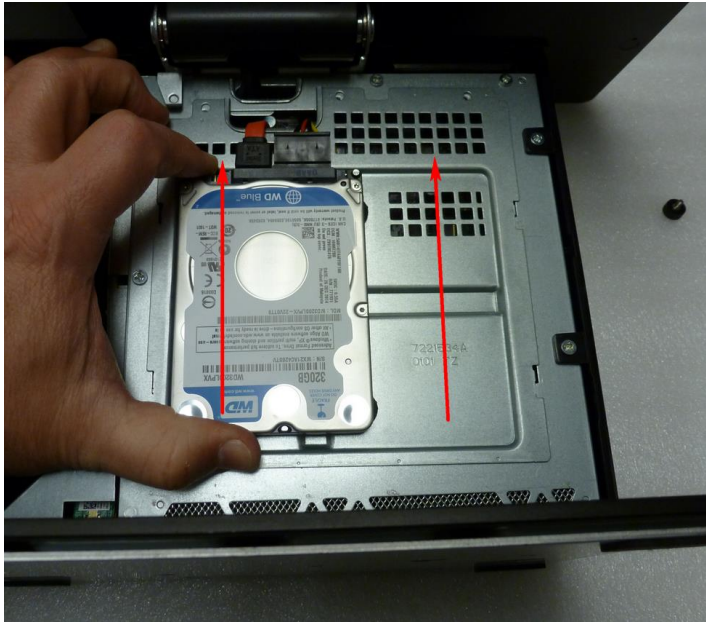
1. With E-Series lying back side down on flat protective surface, pull up on two side tabs to remove front plastic cover. (If cover is secured with a screw, use the Philipps screwdriver to remove it).



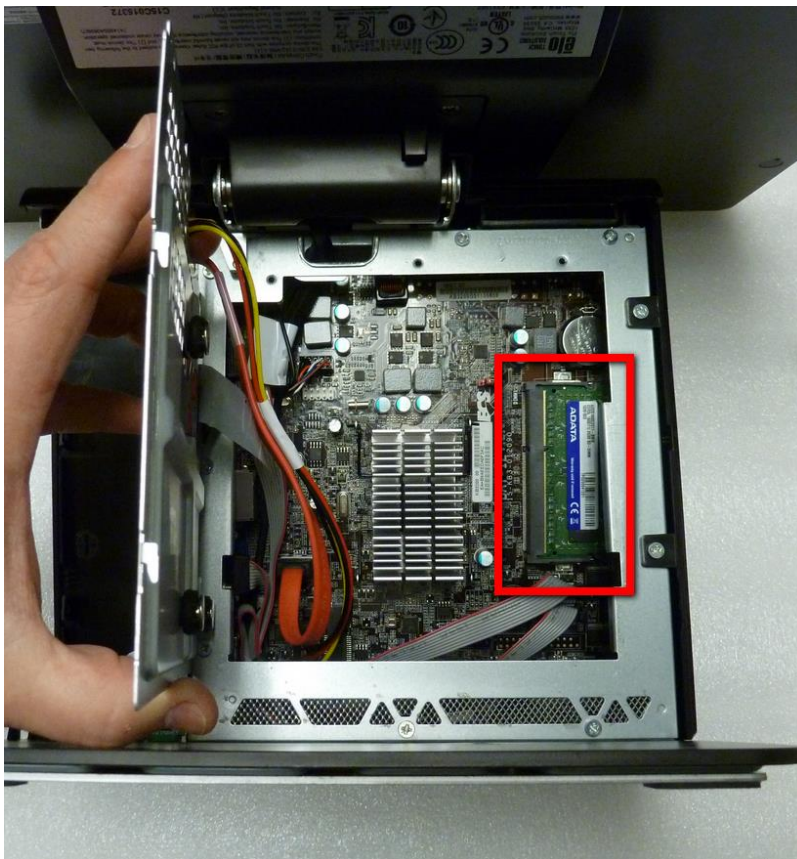
2. Using fingers or the Philipps screwdriver, remove the large black screw that holds the front metal plate.



3. Grasp the HardDrive and push in upward direction to release the front metal plate of unit.

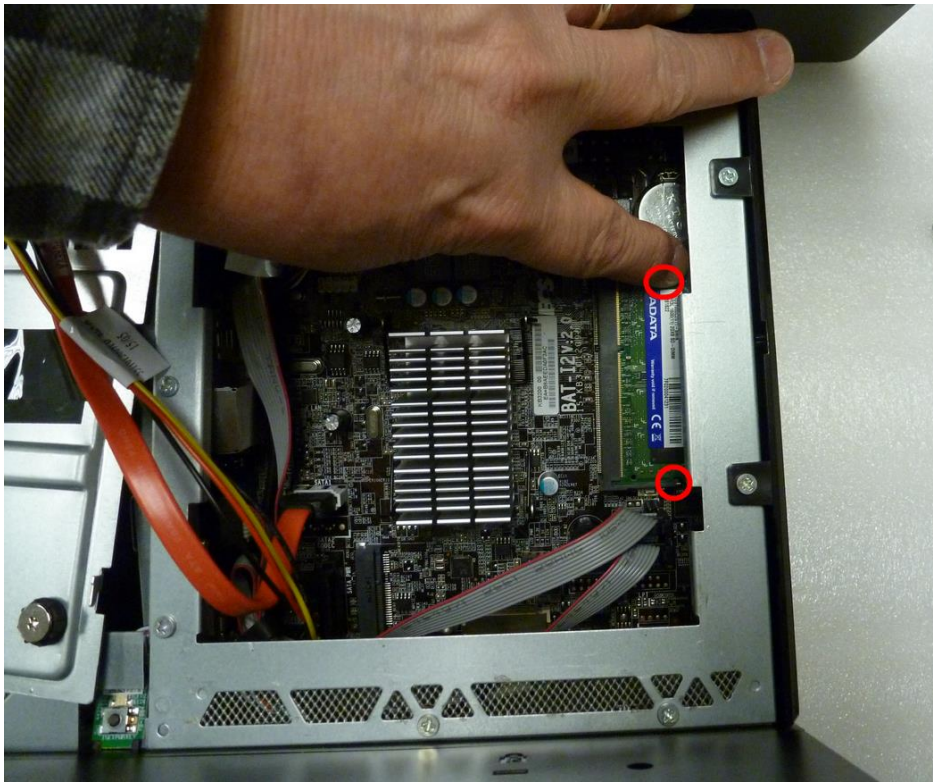


4. Lift front metal plate away from unit to gain access to the RAM module.





- Using fingers push the RAM retainer clips outward to release the RAM module. The RAM will spring upward when fully released.





6. Lift RAM module up out of unit.



7. Replace or add RAM memory module with compatible RAM.

**NOTE:** RAM must be DDR3L (low voltage). Standard DDR3 will not work in this unit, it must be low voltage. Maximum memory using 1 available slot; replacement for single, pre-installed memory module. Replaceable up to 4GB maximum, SODIMM DDR3L-1333.

#### GENERAL TECHNICAL REQUIREMENTS

Technology	DDR3L
Density	4G Bytes
Module Layout	204-pin, SODIMM
Power Supply	1.35V/1.5V
Data Transfer Rate	At least 1600MT/s

Check out our website

**www.elotouch.com**

---

Get the latest...

- Product Information
- Specifications
- Upcoming events
- Press releases
- Software drivers

## Getting in Touch with Us

---

To find out more about the extensive range of Elo touch solutions, visit our website at [www.elotouch.com](http://www.elotouch.com), or simply call the office nearest you:

**North America**  
Elo Touch Solutions  
1033 McCarthy Blvd  
Milpitas, CA 95035

Tel 800-ELO-TOUCH  
Tel + 1 408 597 8000  
Fax +1 408 597 8050  
[customerservice@elotouch.com](mailto:customerservice@elotouch.com)

**Europe**  
Tel +32 (0) 16 70 45 00  
Fax +32 (0)16 70 45 49  
[elosales@elotouch.com](mailto:elosales@elotouch.com)

**Asia-Pacific**  
Tel +86 (21) 6106 7162  
Fax +86 (21) 6485 3981  
[www.elotouch.com.cn](http://www.elotouch.com.cn)

**Latin America**  
Tel 786-923-0251  
Fax 305-931-0124  
[www.elotouch.com](http://www.elotouch.com)