



Elo Touch Solutions

Replacing CMOS Battery in Elo I-Series 2.0 Devices

TS05202018 Rev B

Elo Touch Solutions Technical Services



No part of this publication may be reproduced, transmitted, transcribed, stored in a retrieval system, or translated into any language or computer language, in any form or by any means, including, but not limited to, electronic, magnetic, optical, chemical, manual, or otherwise without prior written permission of Elo Touch Solutions, Inc.

Disclaimer

The information in this document is subject to change without notice. Elo Touch Solutions, Inc. and its affiliates (collectively "Elo") makes no representations or warranties with respect to the contents herein, and specifically disclaims any implied warranties of merchantability or fitness for a particular purpose. Elo reserves the right to revise this publication and to make changes from time to time in the content hereof without obligation of Elo to notify any person of such revisions or changes.

Trademark Acknowledgments

AccuTouch, CarrollTouch, Elo, Elo (logo), Elo Touch, Elo Touch Solutions, Elo TouchSystems, IntelliTouch, iTouch, SecureTouch, TouchTools and VuPoint are trademarks of Elo and its affiliates. Windows is a trademark of Microsoft Corporation.

Table of Contents

Introduction 4

Tools Needed 5

Procedure 6

About This Manual

This document describes how to remove and replace the CMOS battery on an Elo I-Series 2.0 device.

The intended audience of this document includes: IT engineers, system engineers, electrical engineers, and end-users.

If after reading through this guide, you still have questions or need help getting your system up and running, please contact an Elo Touch Solutions Technical Representative. www.elotouch.com

Tools Needed

The following hardware that is needed:

Hardware:

- Elo I-Series 2.0 Device
- #1 Philipps Screwdriver
- Small flat blade screwdriver
- Replacement CMOS battery (+3V Lithium Coin type CR2032)

The following software is needed:

Software:

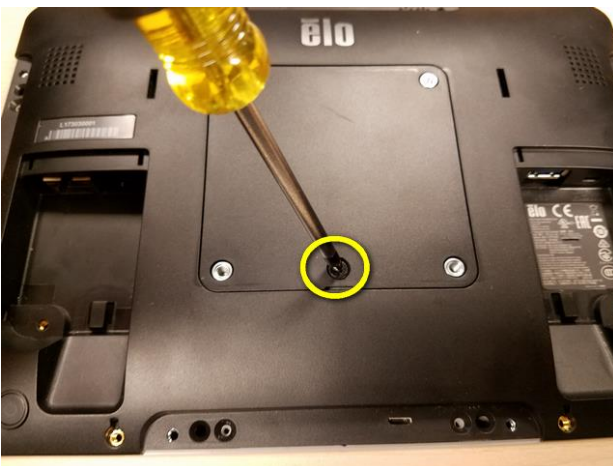
- None

Procedure

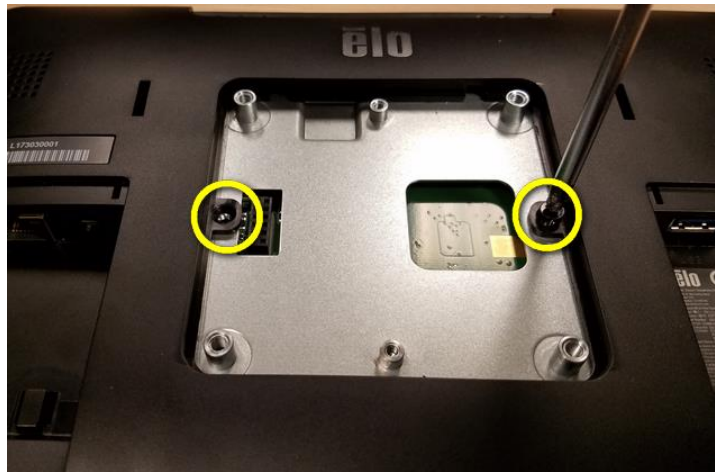
1. Place the Elo I-Series 2.0 Device face down on a protective work surface.
 - a. Remove the 2 cable covers.
 - b. Remove the 4 outer USB covers.
 - c. Remove the 8 Philipps head screws that were underneath the USB covers.



2. Remove the center cover screw and lift off center cover.



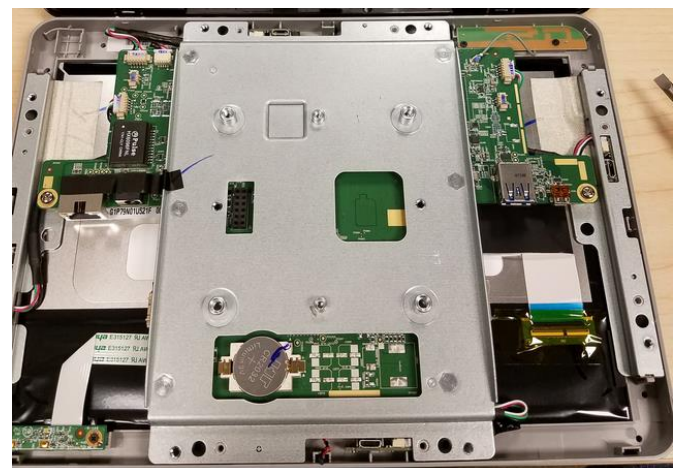
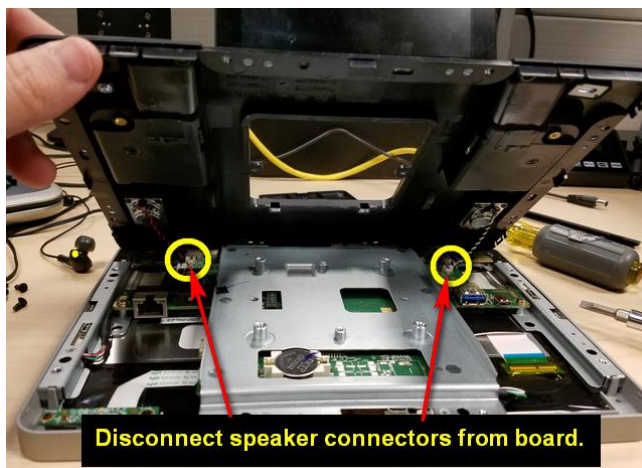
3. Remove the two Philipps screws.



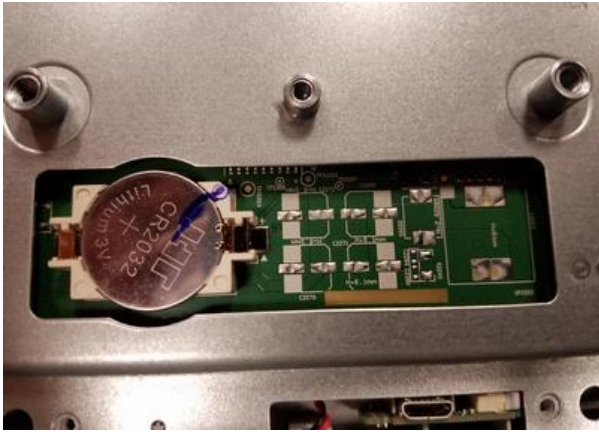
4. Using the flat blade screwdriver, gently pry between the seam of the monitor to separate.
 - a. Plastic will pop up. After it pops up use fingers to gently pull back cover up.



5. As you lift back cover, notice the speaker wires that are connected to the board. These must be disconnected to completely remove back cover.



6. Use flat blade screwdriver to lift CMOS battery up out of retainer.



7. Replace CMOS battery with a +3V Lithium Coin type CR2032 battery.



8. Reassemble unit by following steps in reverse.
9. You may need to adjust system time after starting up.