

Overview

This technical article describes how to update the firmware on the 02-Series IDS monitors equipped with a “New” AD-Board. (See page 3 for serial number New AD-Board cut-in).

Tools Needed

1. USB A-B Cable
2. Power Cable
3. Video Cable (VGA, HDMI, or DisplayPort)
4. Windows 7/8/8.1/10 Computer (external PC, NOT ECM)
5. Firmware update files **Rev. D**: <https://tinyurl.com/w4yaq4h>
6. Firmware Upgrade Tool **V00.07**: <https://tinyurl.com/u45z8ch>

Steps

1. Connect USB, Video, and Power cables between host pc and IDS-02 monitor. Do not do this process remotely.

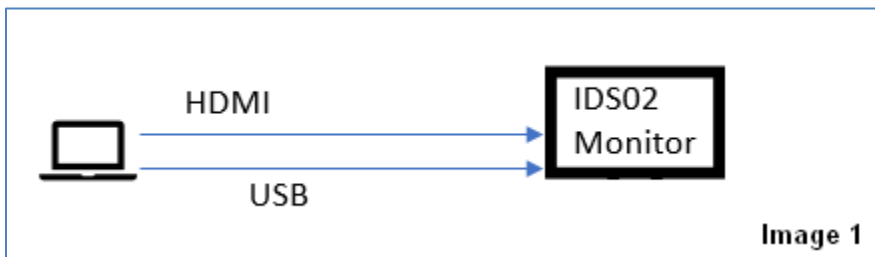
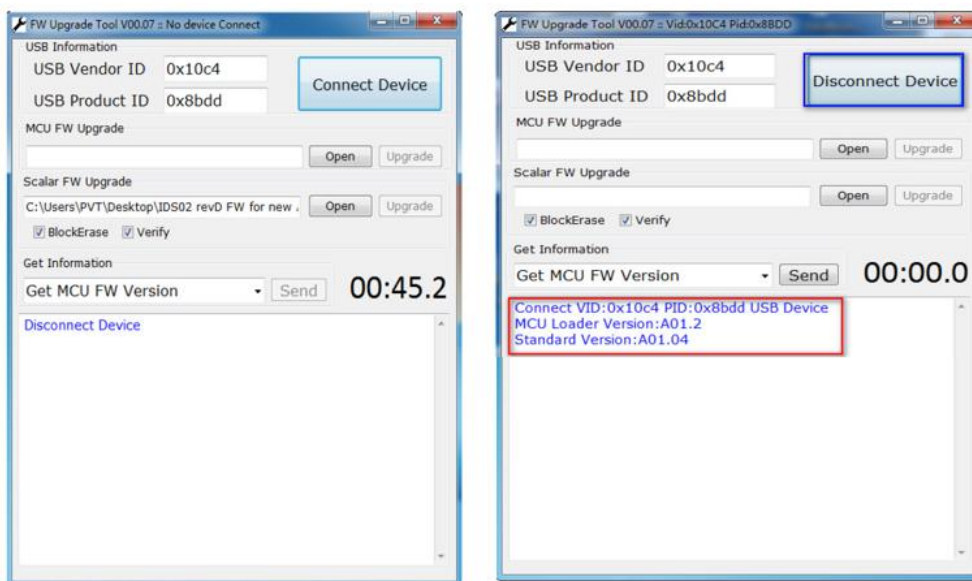
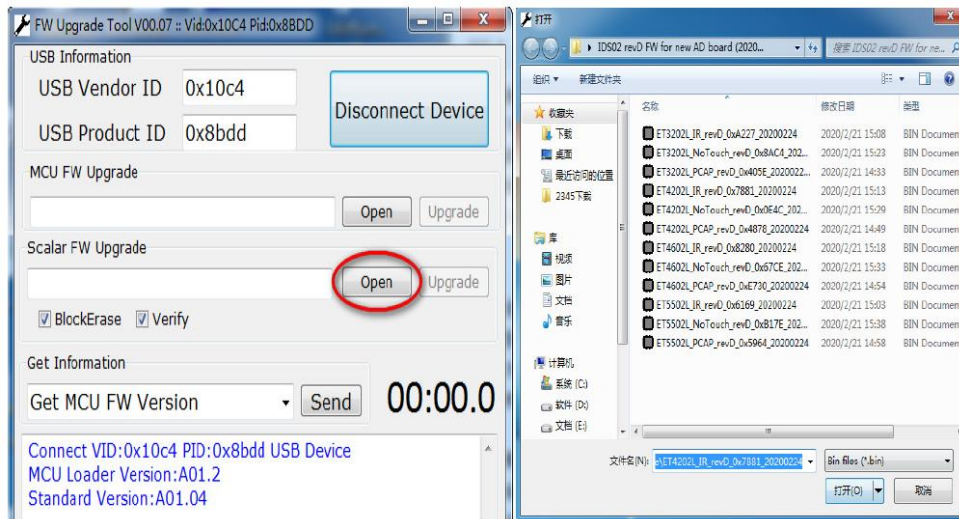


Image 1

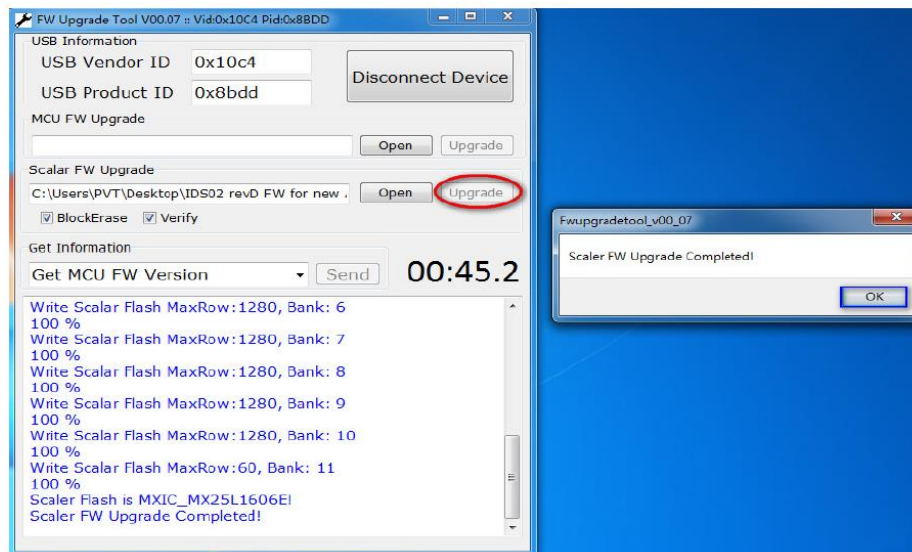
2. Open F/W Upgrade Tool V00.07 on PC and click the **Connect Device** button.
 - a. You should receive a message as shown below.



3. Click **Open** and select the correct firmware file to upload.



4. Click **Upgrade** to start the program. When upgrade is completed a message will appear stating: "**Scaler FW Upgrade Completed**" click on the "**OK**" button.



5. After updating firmware, open a black screen ([black.jpg](#))
 - a. If snow or white pixels are seen ([snow example.png](#)), ECMG3 is a problem and should be sent for RMA.
 - b. If continuous on or off are seen the full system (monitor + ecm) should be sent for RMA.

New AD Board Serial Number Cut-In

PVT Serial Numbers

Model	Description	Cut-in S/N for new AD board
E222369	ET4202L-9UWA-0-MT-GY-G	A19C017801
E222370	ET4602L-9UWA-0-MT-GY-G	A19C017802
E218847	ET5502L-9UWA-0-MT-GY-G	A19C017803
E218847	ET5502L-9UWA-0-MT-GY-G	D19C002671~D19C002719
E222370	ET4602L-9UWA-0-MT-GY-G	D19C002822~D19C002870
E222369	ET4202L-9UWA-0-MT-GY-G	D19C002871~D19C002919
E222371	ET3202L-2UWA-0-MT-ZB-GY-G	D19C002920~D19C002968

MP Serial Numbers

Model	Description	Cut-in S/N for new AD board
E059437	ET3202L-2UWA-0-MT-W-WH-NL-RDKN	A20C002175
E222371	ET3202L-2UWA-0-MT-ZB-GY-G	H19C011792
E222368	ET3202L-9UWA-0-MT-GY-G	H19C009130
E222372	ET4202L-2UWA-0-MT-ZB-GY-G	H19C016431
E222369	ET4202L-9UWA-0-MT-GY-G	H19C004415
E441095	ET4602L-0UWA-0-GY-G	H19C004665
E222373	ET4602L-2UWA-0-MT-ZB-GY-G	H19C004677
E222370	ET4602L-9UWA-0-MT-GY-G	H19C009028
E218562	ET5502L-2UWA-0-MT-ZB-GY-G	G19C013223
E218847	ET5502L-9UWA-0-MT-GY-G	G19C013243