

Included items:

1x wallmount bracket

1x bracket adaptor

3x M3x6 screws (Kit E160491 only)

4x M3x6 screws (Kit E160680 only)



**Recommended
Drywall Insert
Type**

www.elotouch.com

Quick Installation Guide

Wallmount Kit

for Android i-Series

Elo Touch Solutions Technical SupportOnline self-help: www.elotouch.com/go/websupport**Technical Support contacts in your region:**www.elotouch.com/go/contactsupport**North America**

Elo Touch Solutions
1033 McCarthy Boulevard
Milpitas, CA 95035

800-ELO-TOUCH

Tel +1 408 597 8000

Fax +1 408 597 8050

customerservice@elotouch.com**Europe**

Tel +32 (0)16 70 45 00

Fax +32 (0)16 70 45 49

elosales@elotouch.com**Latin America**

Tel 786-923-0251

Fax 305-931-0124

www.elotouch.com**Asia-Pacific**

Tel +86 (21) 3329 1385

Fax +86 (21) 3329 1400

www.elotouch.com.cn

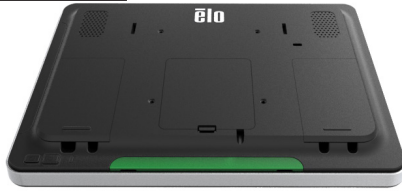
Revision A
P/N E262184

The information in this document is subject to change without notice. Elo Touch Solutions, Inc. and its Affiliates (collectively "Elo") makes no representations or warranties with respect to the contents herein, and specifically disclaims any implied warranties of merchantability or fitness for a particular purpose. Elo reserves the right to revise this publication and to make changes from time to time in the content hereof without obligation of Elo to notify any person of such revisions or changes.

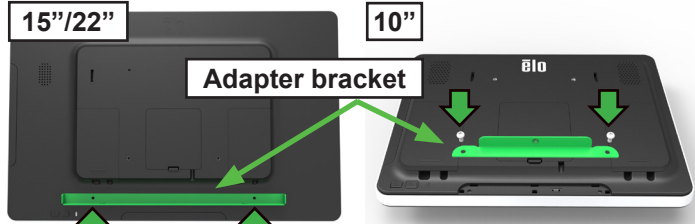
No part of this publication may be reproduced, transmitted, transcribed, stored in a retrieval system, or translated into any language or computer language, in any form or by any means, including, but not limited to, electronic, magnetic, optical, chemical, manual, or otherwise without prior written permission of Elo Touch Solutions, Inc.

Elo (logo) and Elo Touch Solutions are trademarks of Elo and its Affiliates.

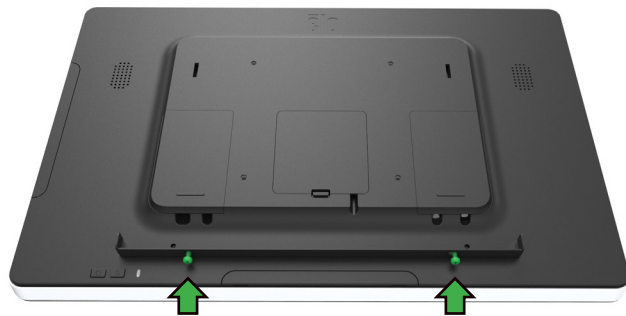


Step 1**10" only**

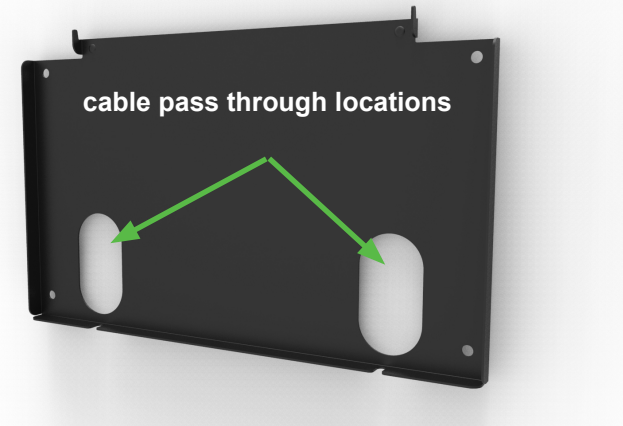
Remove the lower peripheral cover.

Step 2**15"/22"****10"****Adapter bracket**

Install the bracket adaptor using two of the M3 screws included in the kit:
 10": The bracket mounts to the lower peripheral location
 15"/22": Use the two screw holes on the back of the monitor.

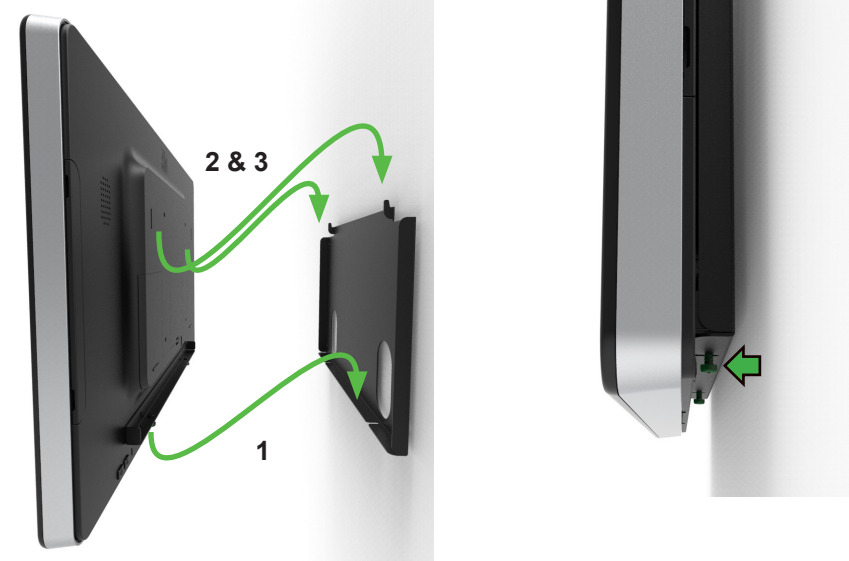
Step 3

Loosely install two M3 screws onto the threaded holes on the bracket (10" only requires one screw) so they can be tightened at the end of installation.

Step 4**cable pass through locations**

The wallmount may be fastened to wood, drywall, or masonry using #12 or M4 fasteners

- Elo recommends using flush type wall inserts if available (see back page).
- Cables may be hidden by drilling through the wall in the indicated locations for cables to pass through.
- The wallmount bracket can be installed in either landscape or portrait orientation.

Step 5

Use the adaptor bracket on the rear of the display to center the display head on the wallmount bracket. Then gently lift the display upward against the wallmount so the hooks line up with the pockets on the back of the display. Then tilt the bottom of the display outward slightly to engage the hooks.

Tighten the screws on the adaptor bracket installed in step 3.