

UIC680TG

Demo AP User Guide

Jan 15, 2013

Rev.1

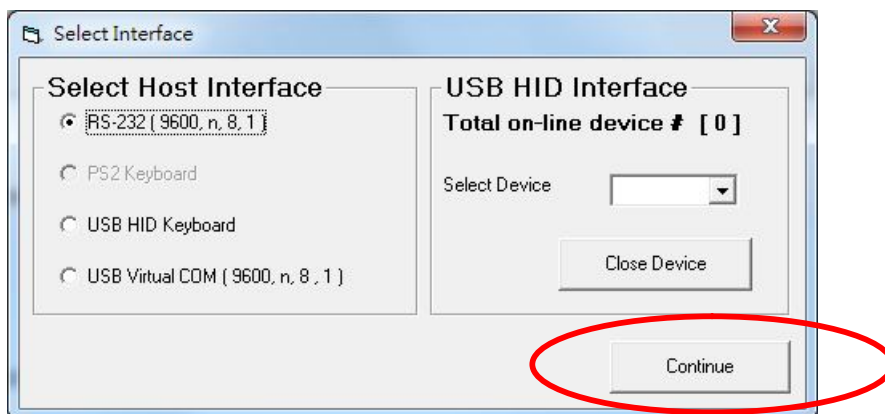
Table Of Contents

Communication	1
RS232	1
USB Mode	2
Problem Communication Error	3
Application Overview	4
Common Function Description.....	5
Show Status.....	5
Set Configuration.....	6
Direct IO Command.....	7
Commands List.....	8
Setting And Response	9
Operation.....	10
Commands List.....	10
Direct IO	12

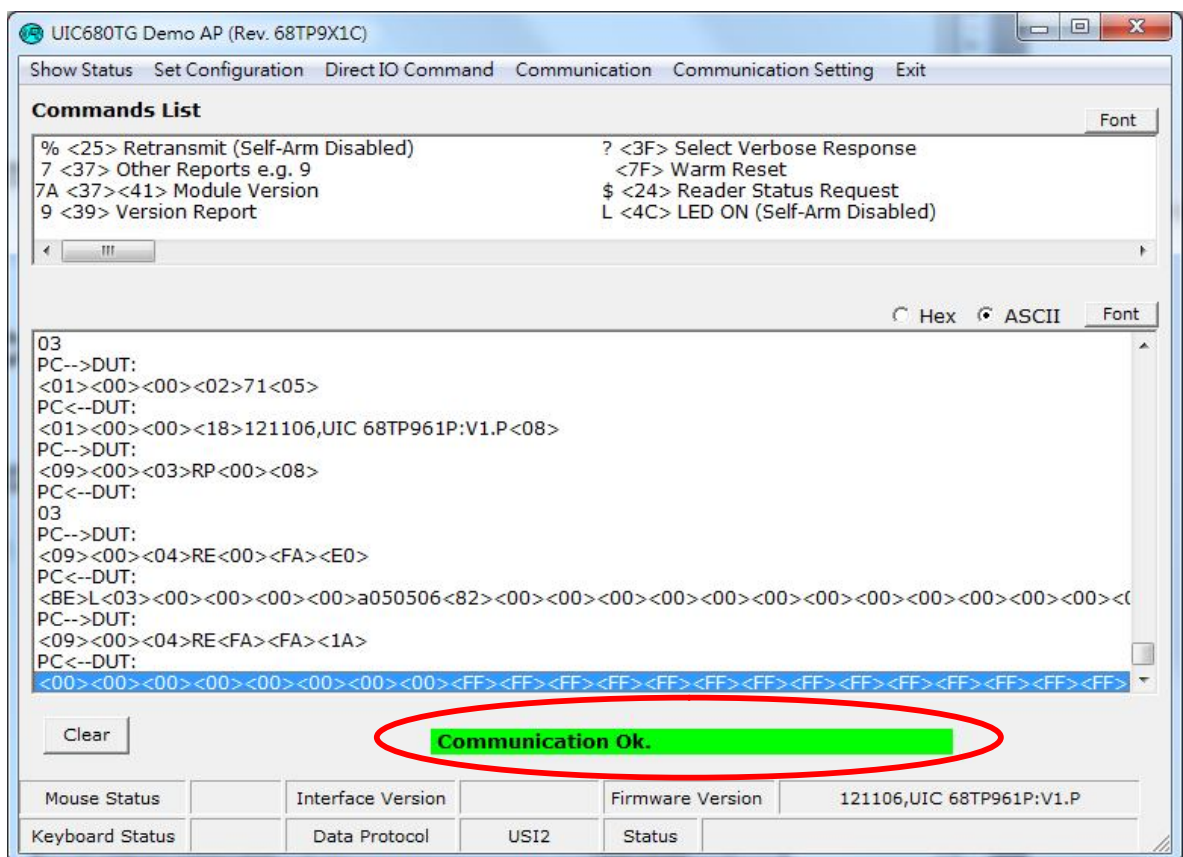
Communication

RS232

Step 1. Open UIC680TG Demo AP (Version: 68TP9X1C), select interface (example is using RS232 interface.), then click “**Continue**” button.

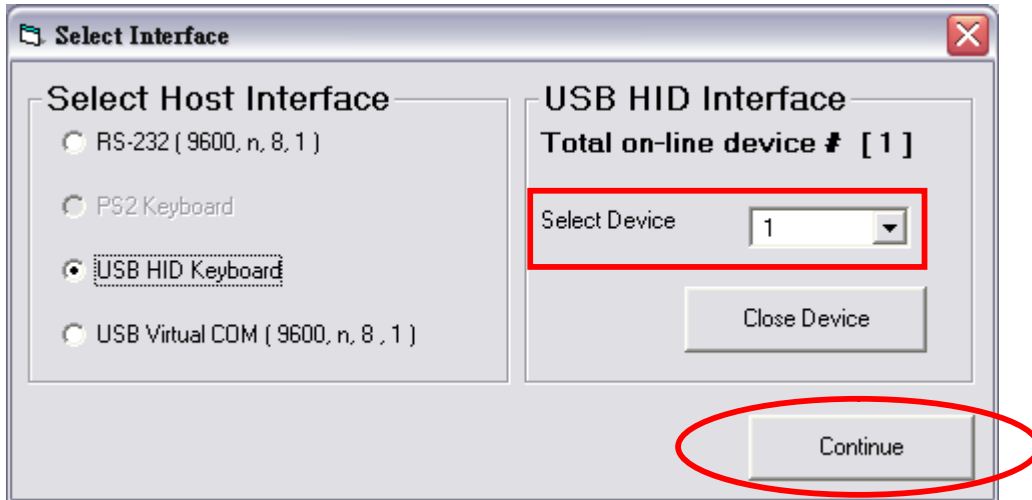


Step 2. Auto detecting form will show up, you will see “**Communication Ok**” message in green block.

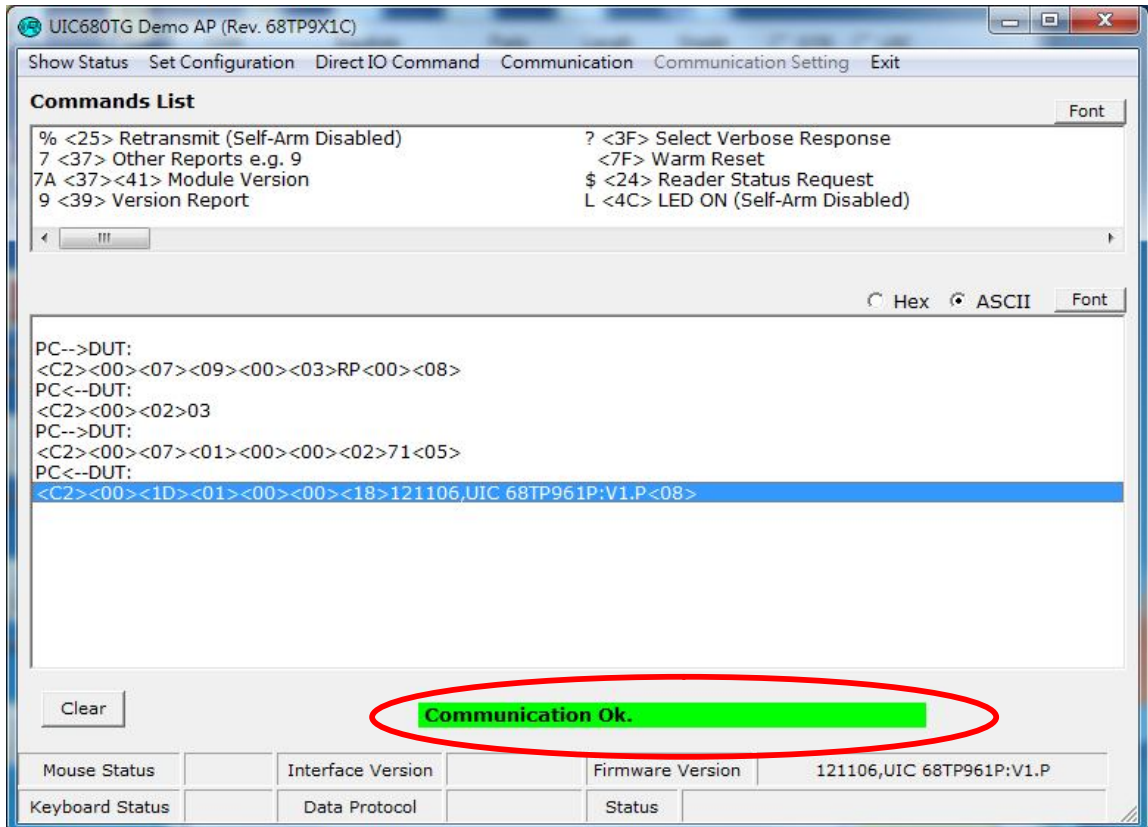


USB Mode

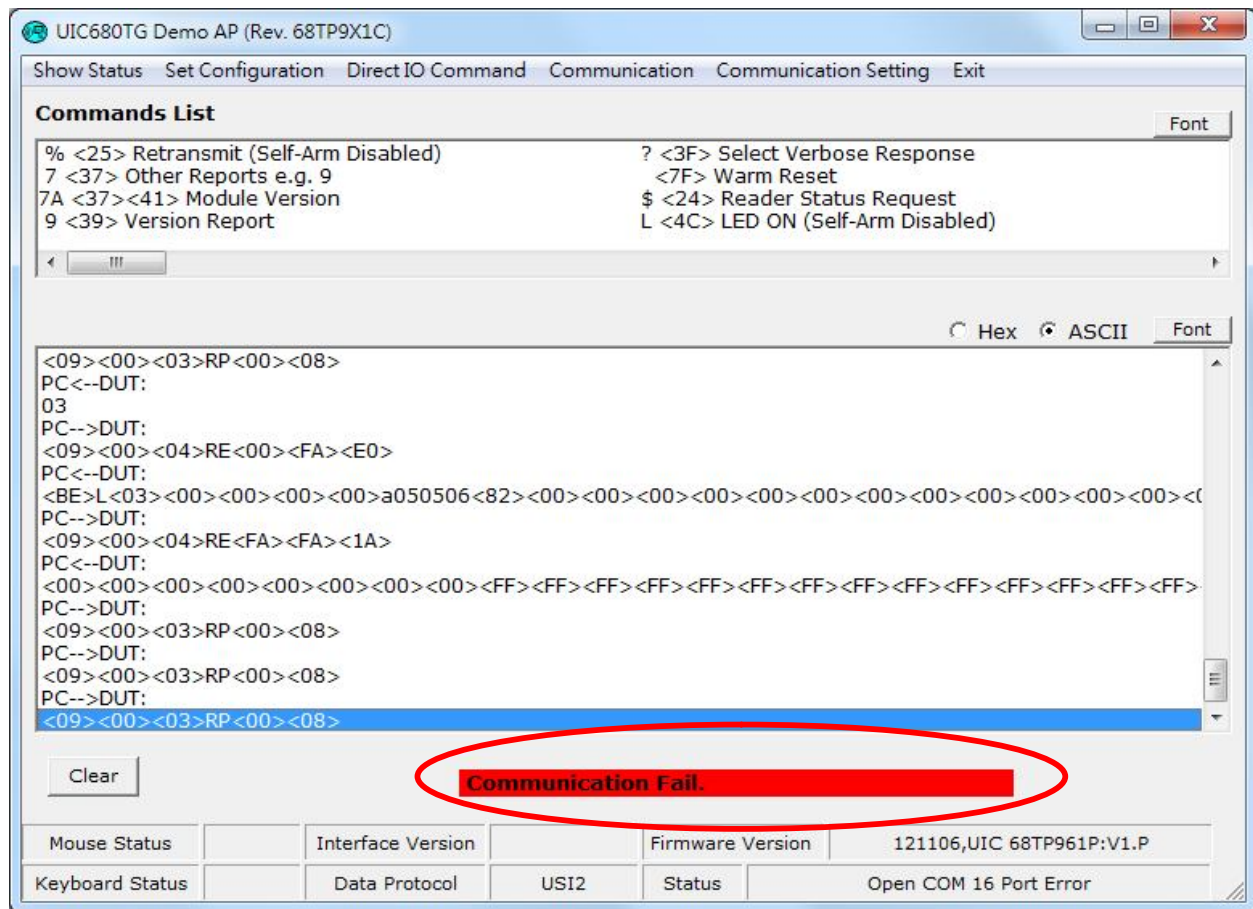
Step 1. Open UIC680TG Demo AP (Version: 68TP9X1C), select interface to USB HID Keyboard, check the device is available, and then click “**Continue**” button.



Step 2. Auto detecting form will show up, you will see “**Communication Ok**” message in green block.



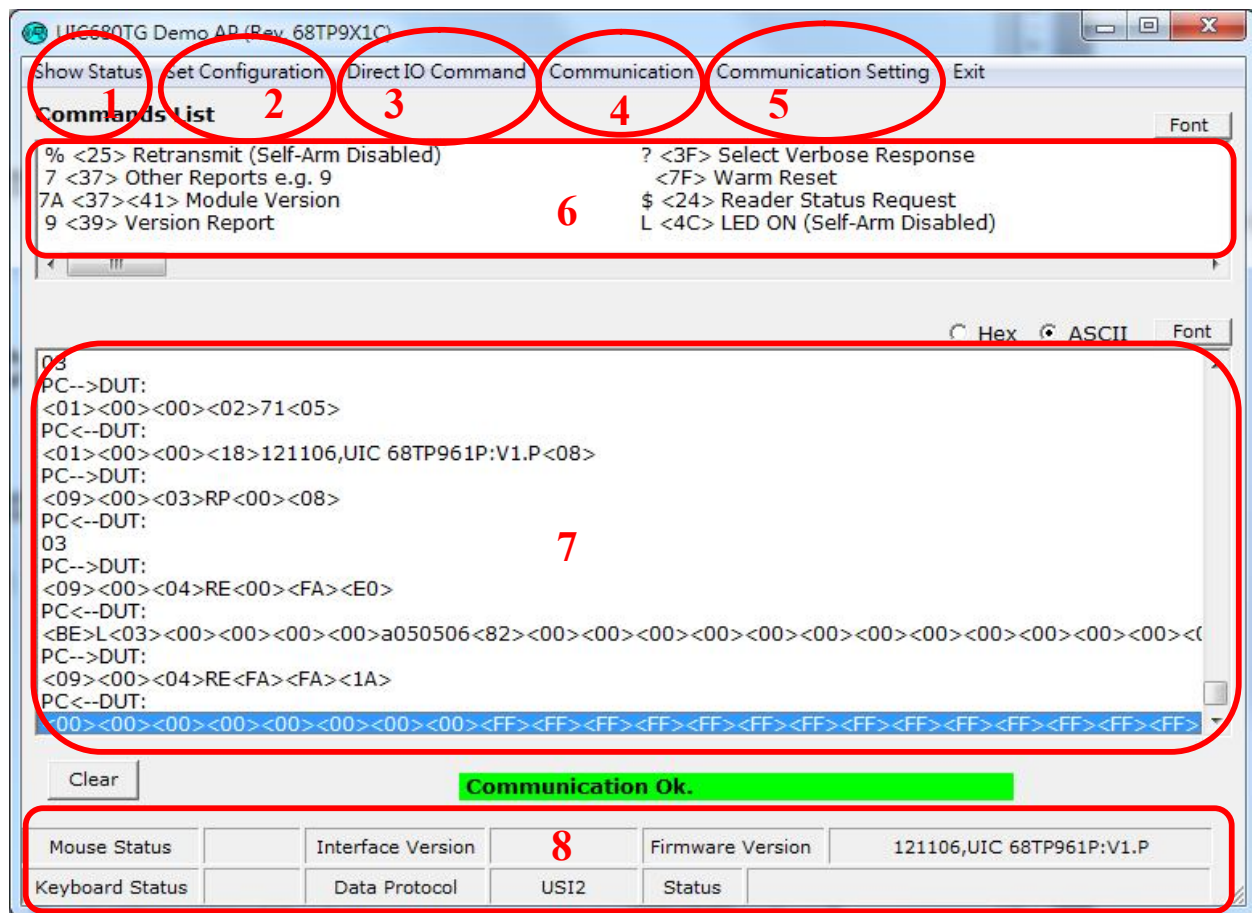
Problem Communication Error



If Communication failed with the device, try the following procedure to fix it.

1. Check RS232 or USB cable interconnection between the system and UIC680TG.
2. Go to Windows Device Manager AP and check if UIC680TG is under/included COM 16.
If not, change it under/included port 16.

Application Overview



1. **“Show Status”** will open a form with the reader current settings.

2. **“Set Configuration”** is to change configuration settings.

3. **“Direct IO Command”** is to send command or data to reader manually.

4. **“Communication”** establish connection with UIC680

5. **“Communication Setting”** Set COM port, baud rate and parity
(only works with the RS-232 interface)

6. **“Commands List”** Double click on a command to execute.

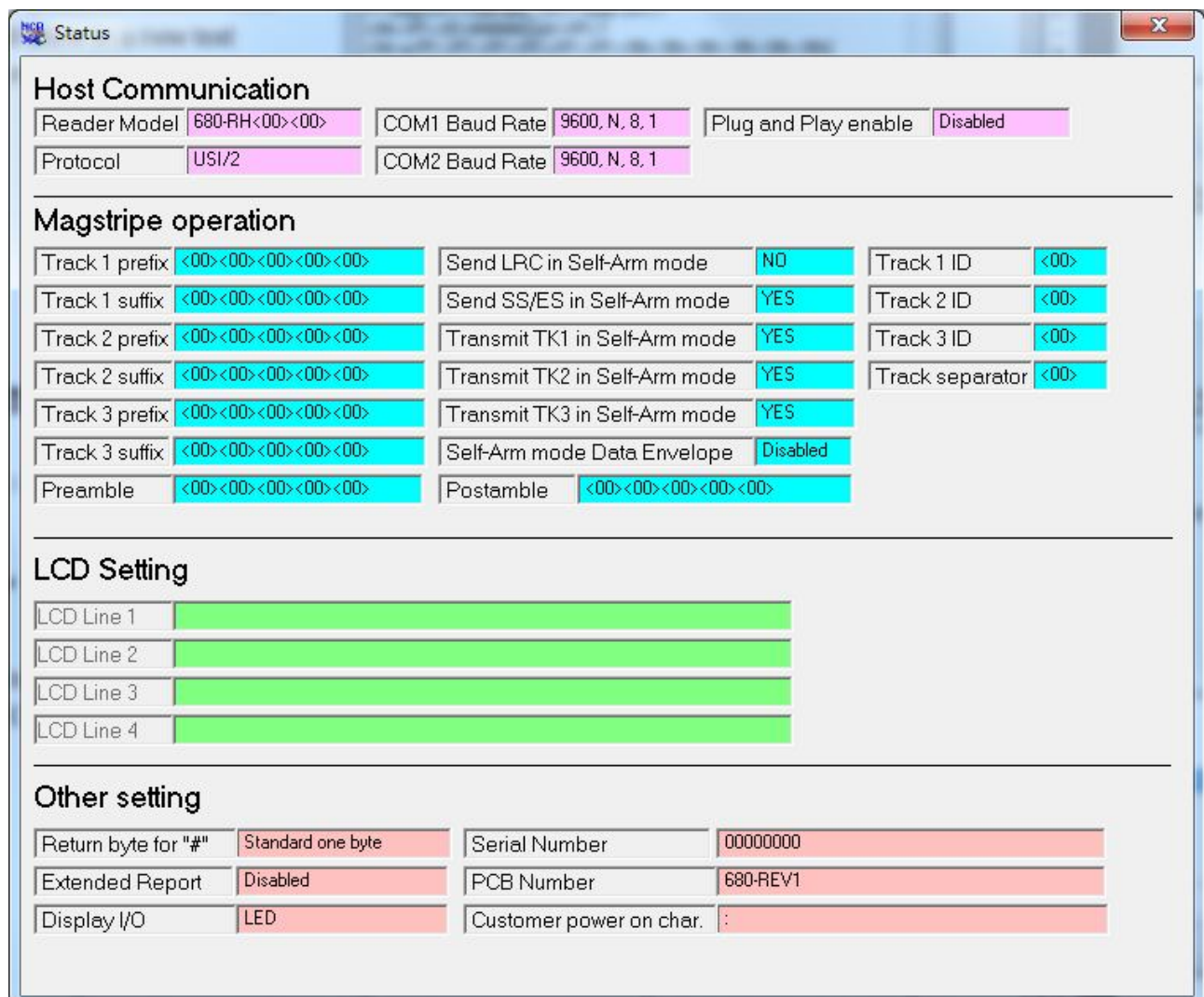
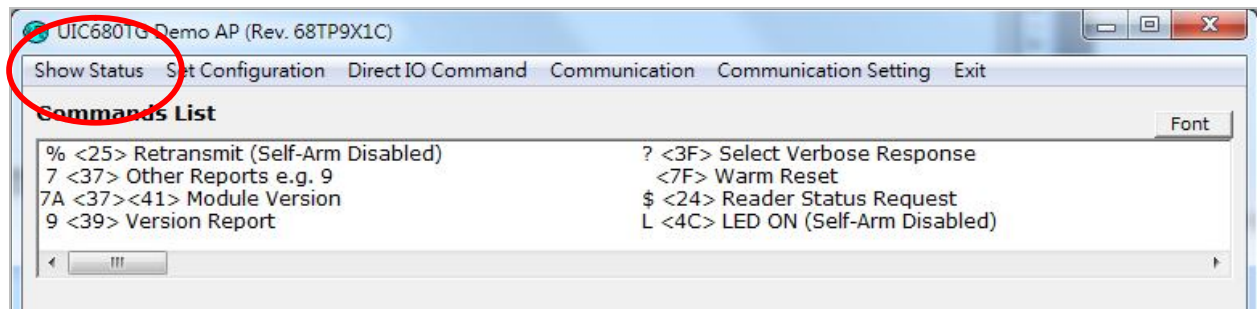
7. Display commands and response messages

8. **“Status bar”** showing reader information

Common Function Description

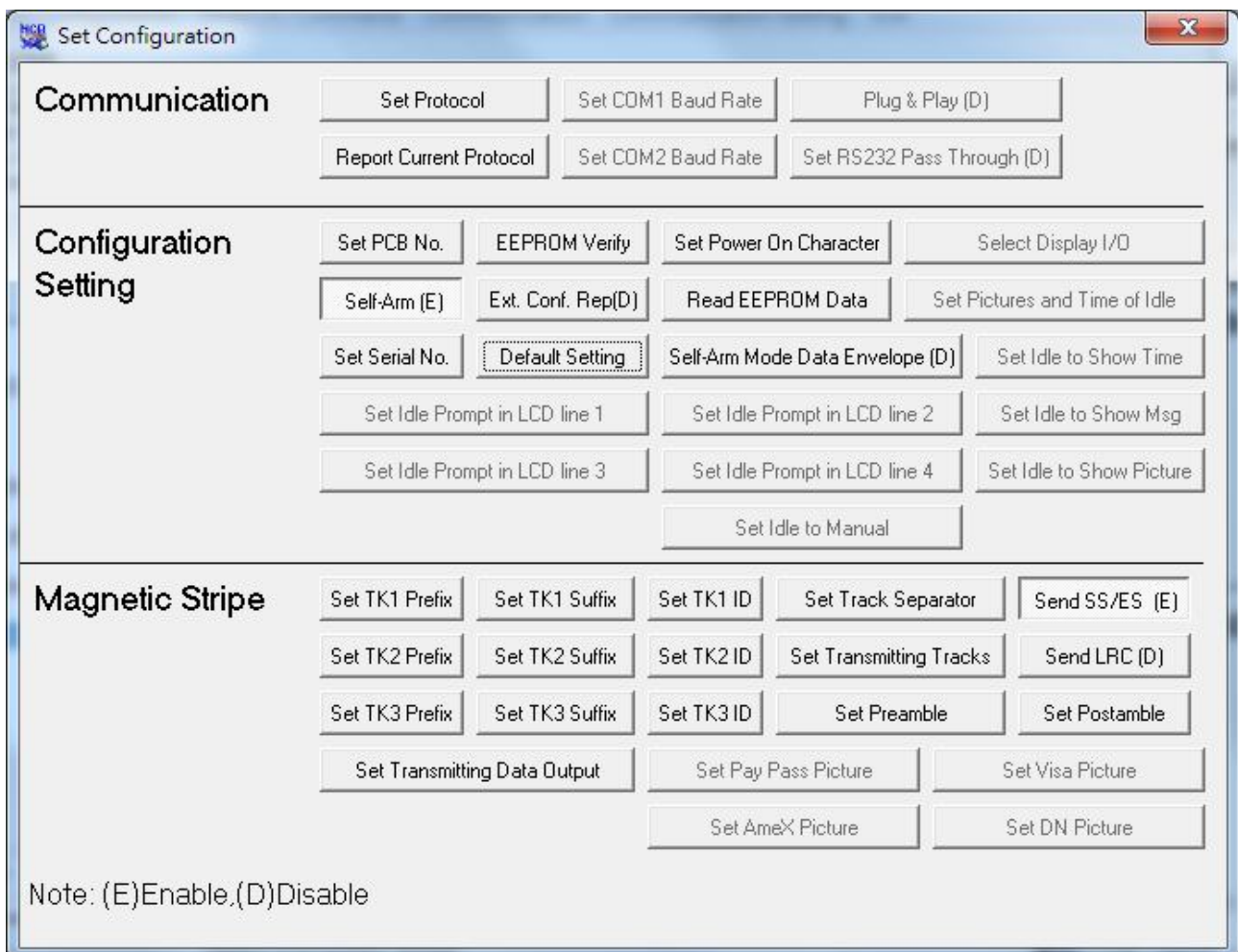
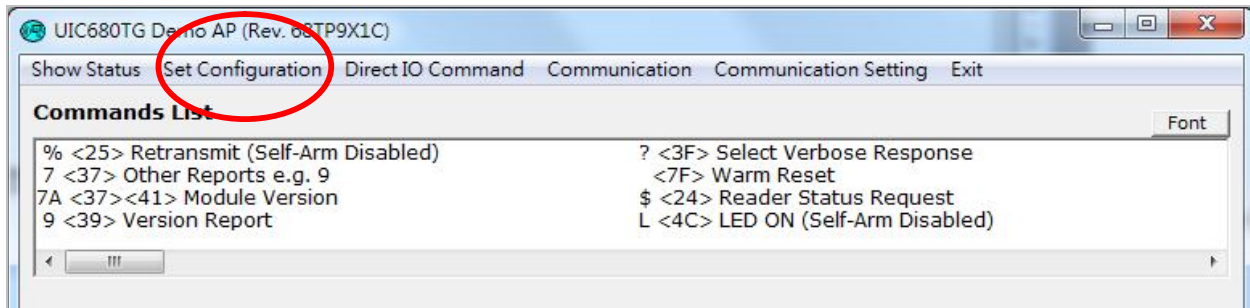
Show Status

Press this button will bring up a window displaying the configuration data of the connected reader.



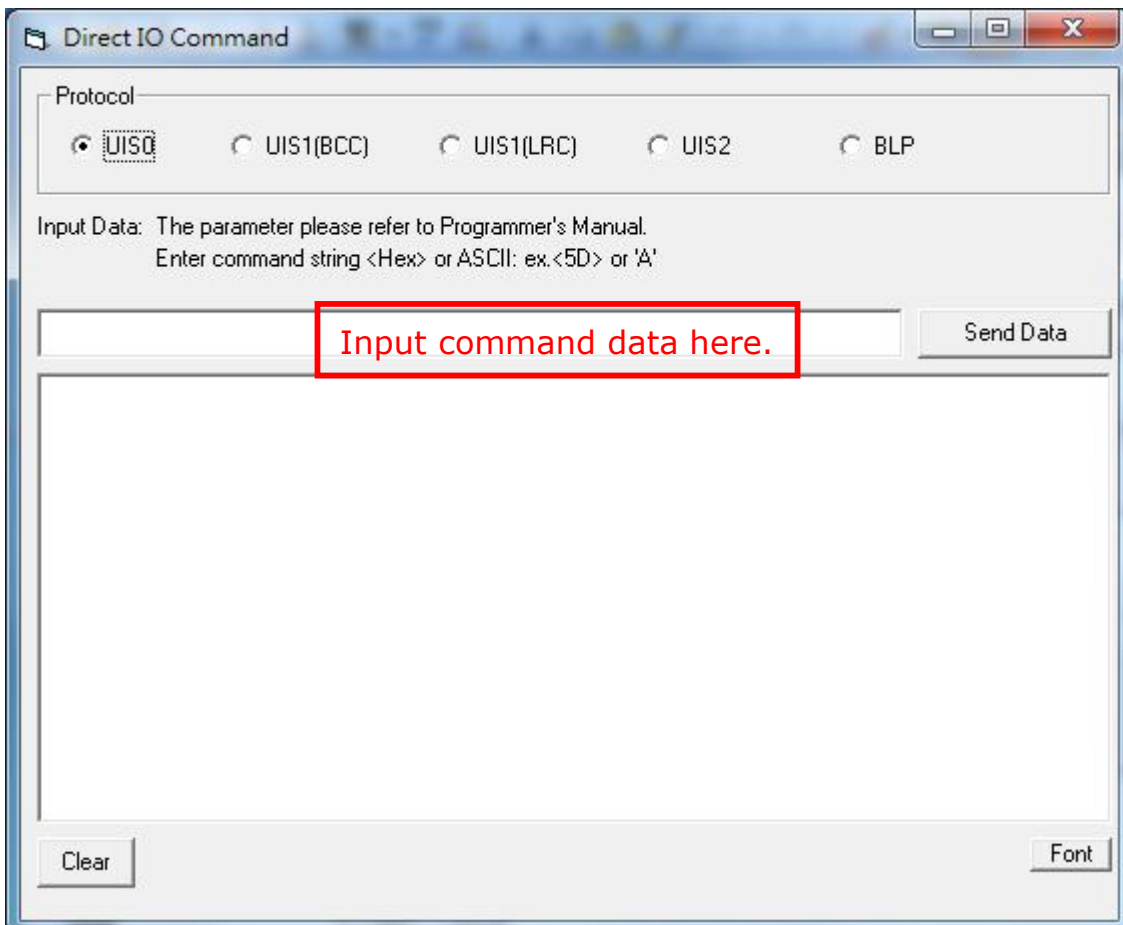
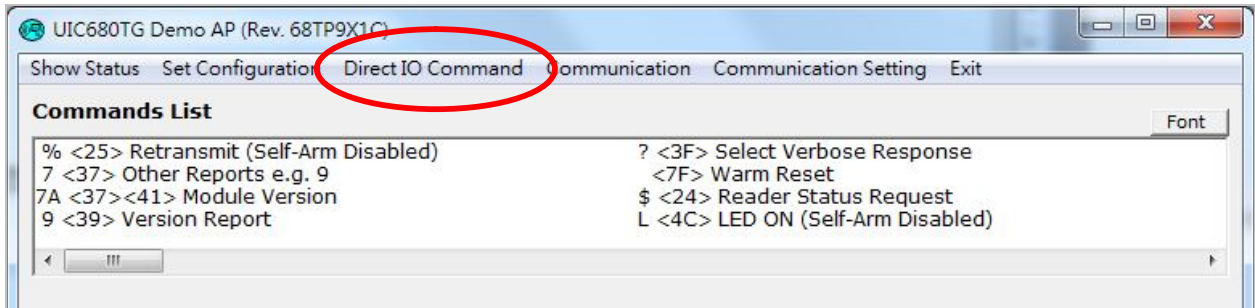
Set Configuration

Allow changing the configuration of the reader. (For more information on configuration, please see UIC680TG Configuration guide)



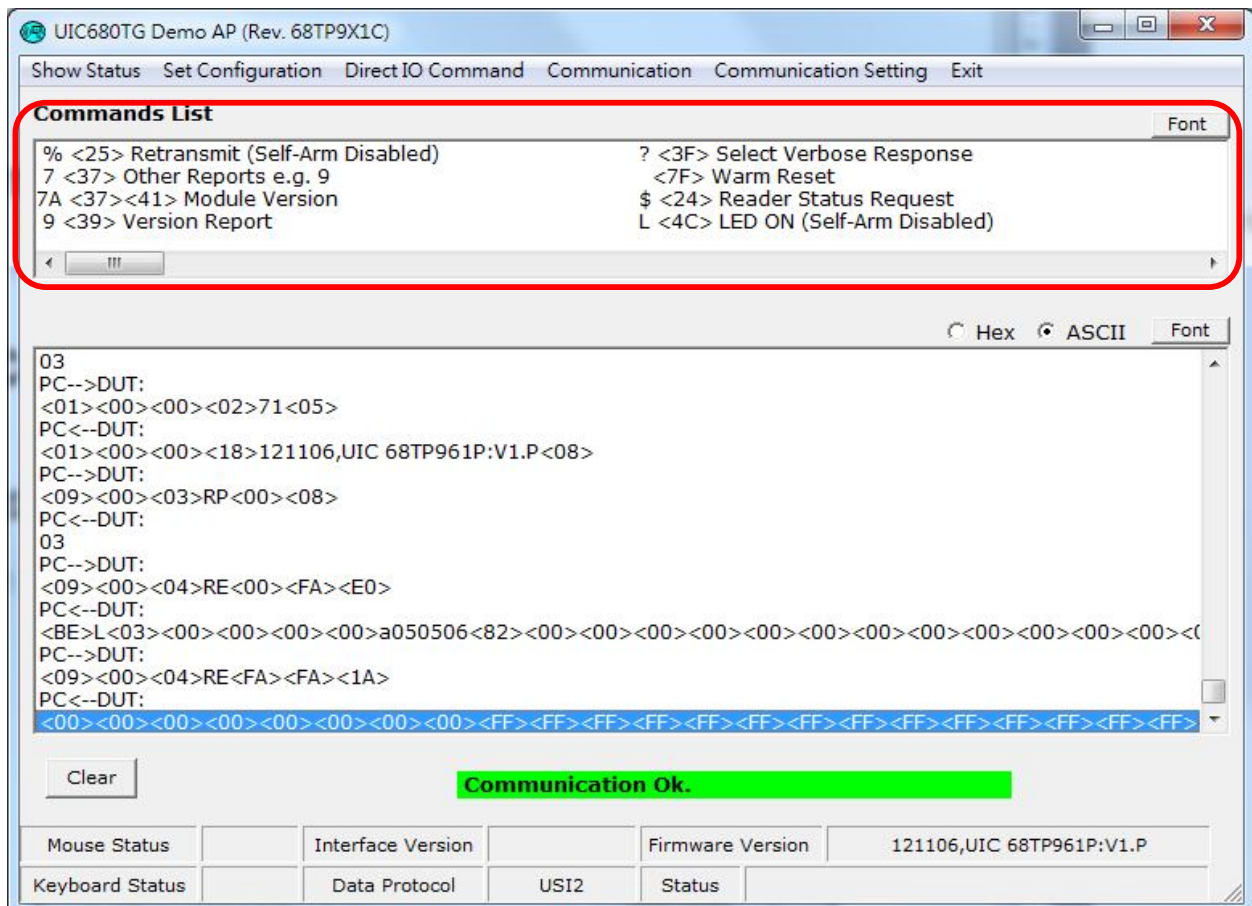
Direct IO Command

1. If you need commands that are not listed in the 'Commands List' please click 'Direct IO Command'.
2. Input the complete command format and click the 'Send Data' button to send the command to the reader manually.

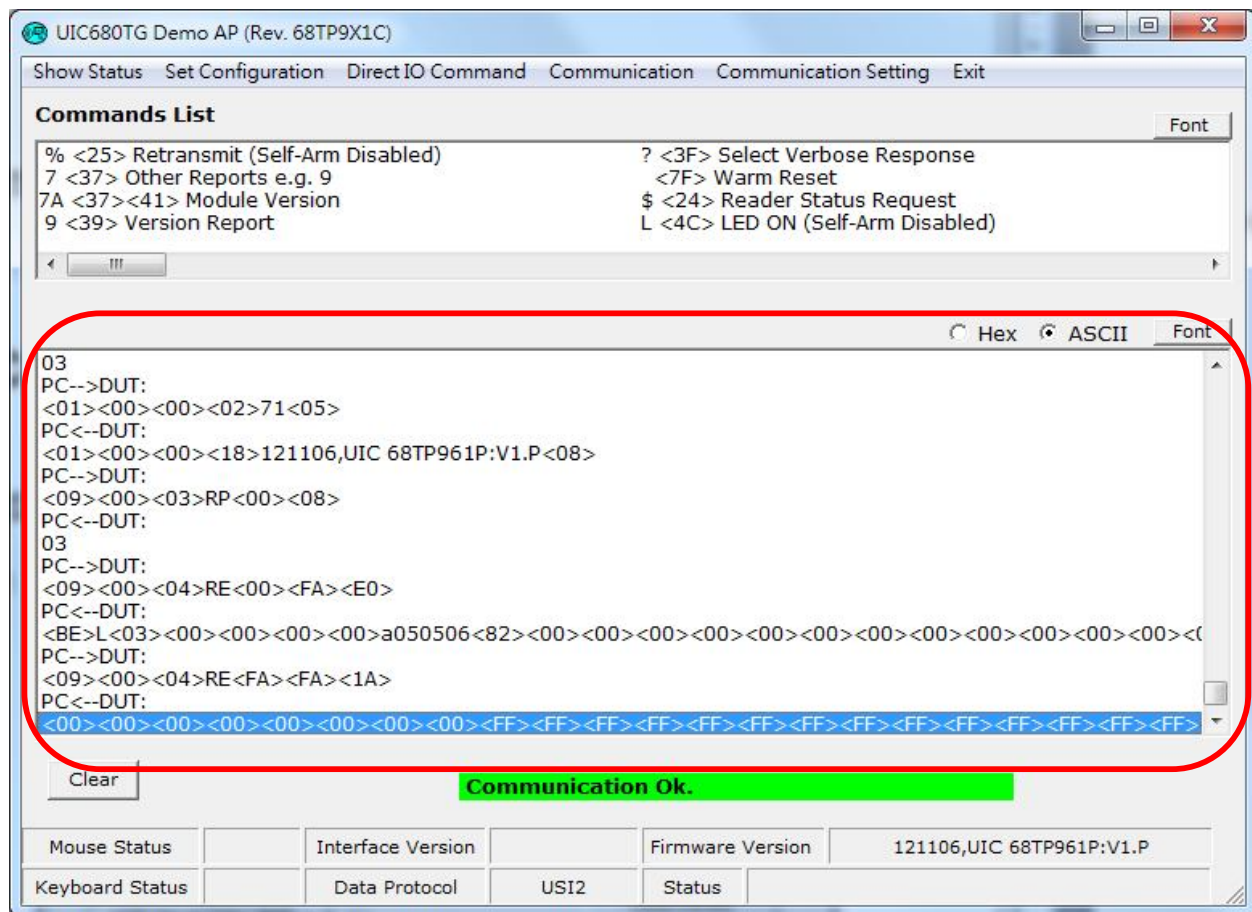


Commands List

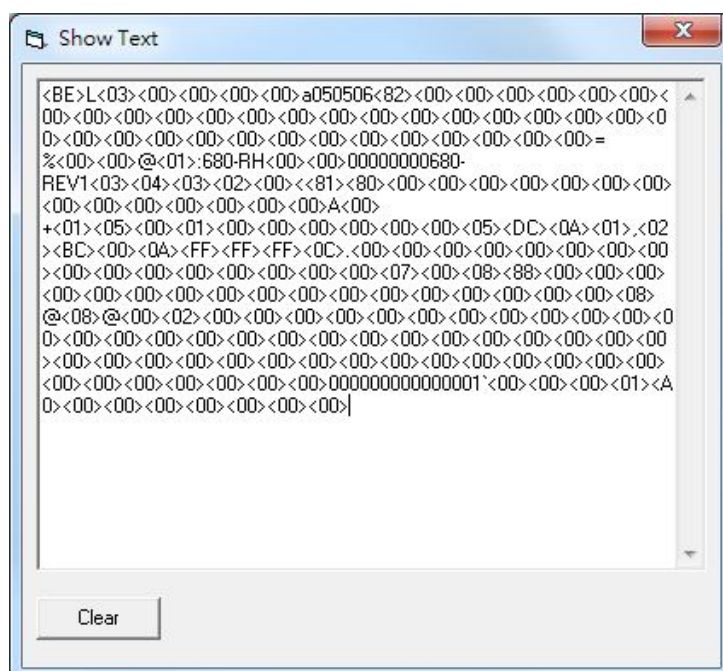
Double click to execute either a reader command or a contactless card command, some commands may need to input parameters, detail parameter setting please refer to “UIC680TG Programmer’s Manual”.



Setting & Response



The communication between PC and reader will show in the below text block, if you want to see the complete transaction data, please double click the data, complete transaction data will show in a new text form.

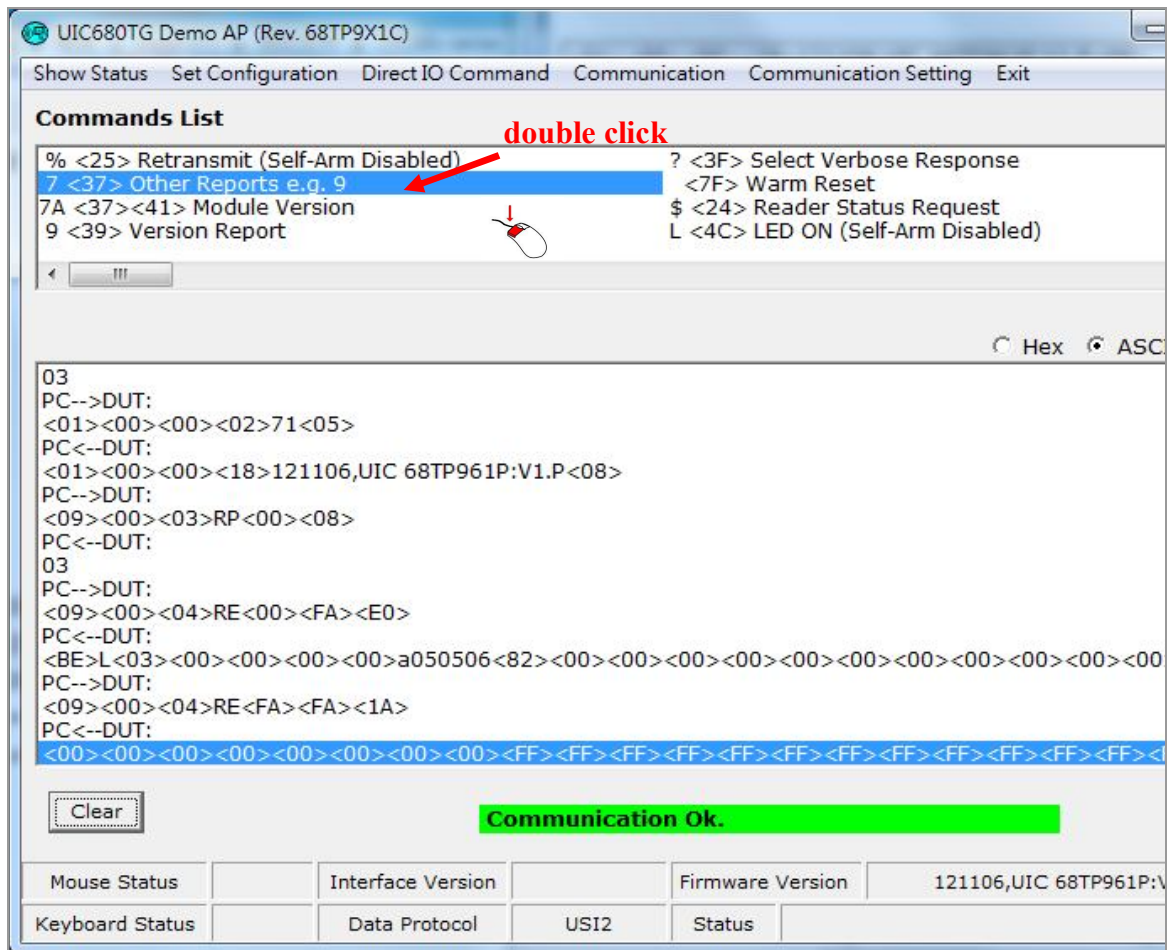


Operation

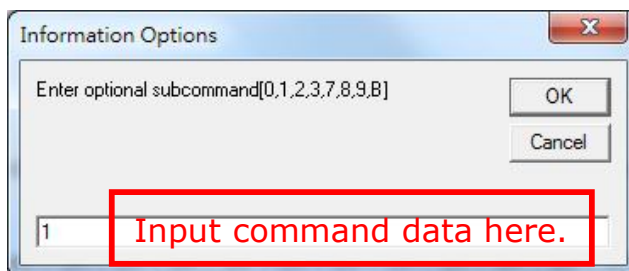
Setting command with use commands list and direct IO (example is using command “71”)

Commands List

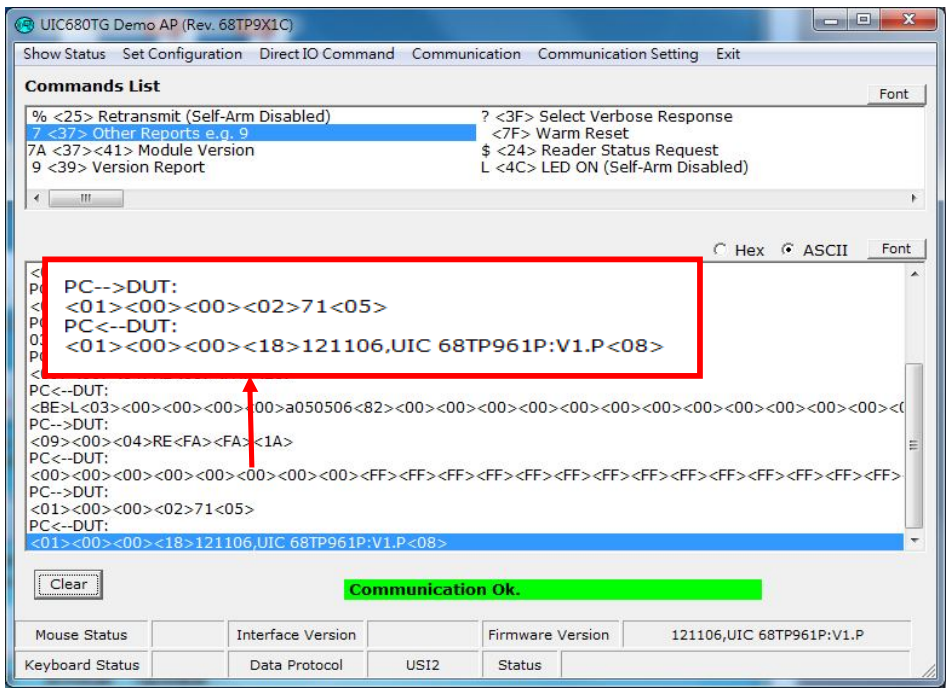
Step 1 Please double click “7<37> Other Reports e.g. 9” in the commands list.



Step 2 Input command value then press “OK”



Step 3 Command will be set and response.



PC-->DUT: <01><00><00><02>71<05>

Setting command

“71” copyright report

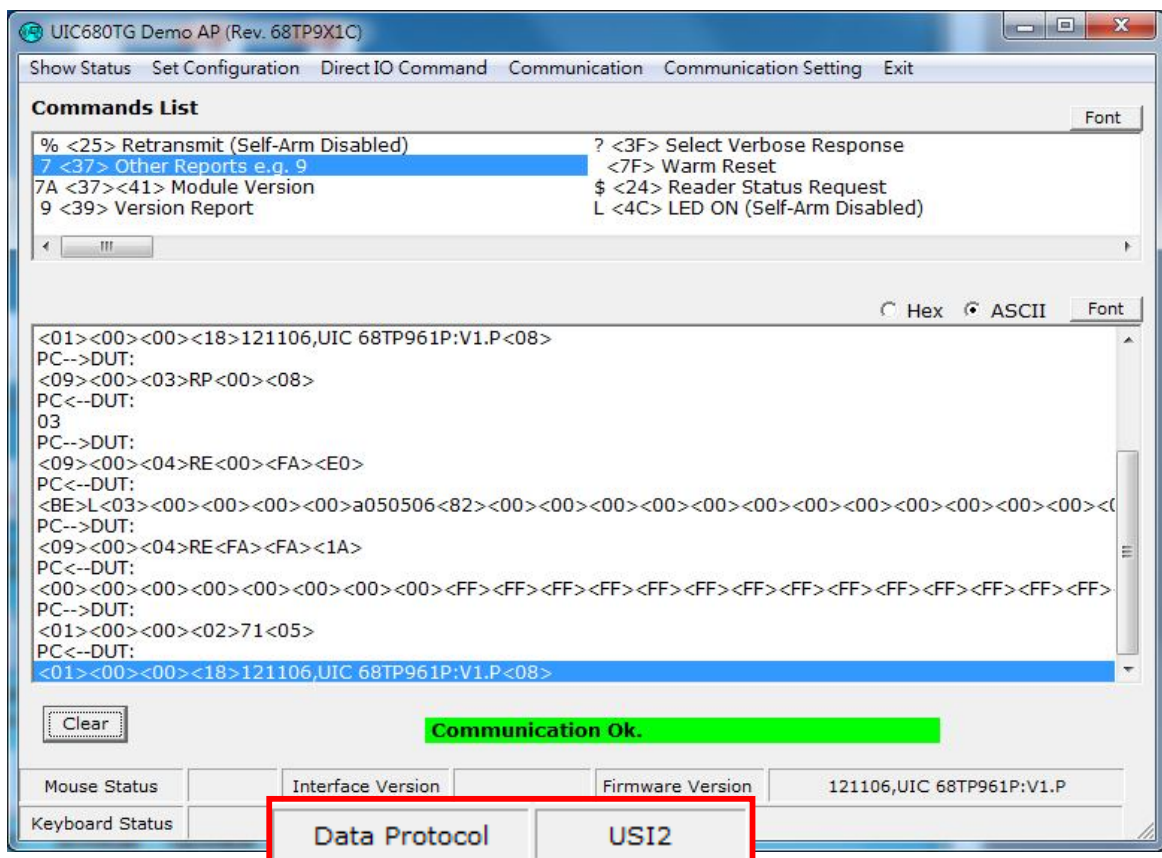
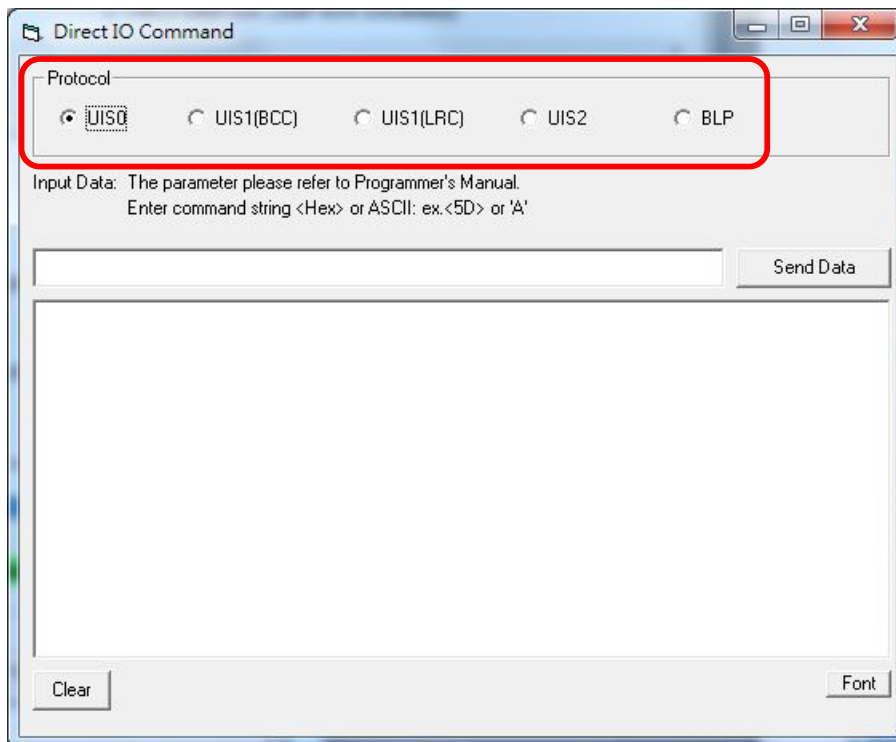
PC<--DUT: <01><00><00><18>121106,UIC 68TP961P:V1.P<08>

Response result

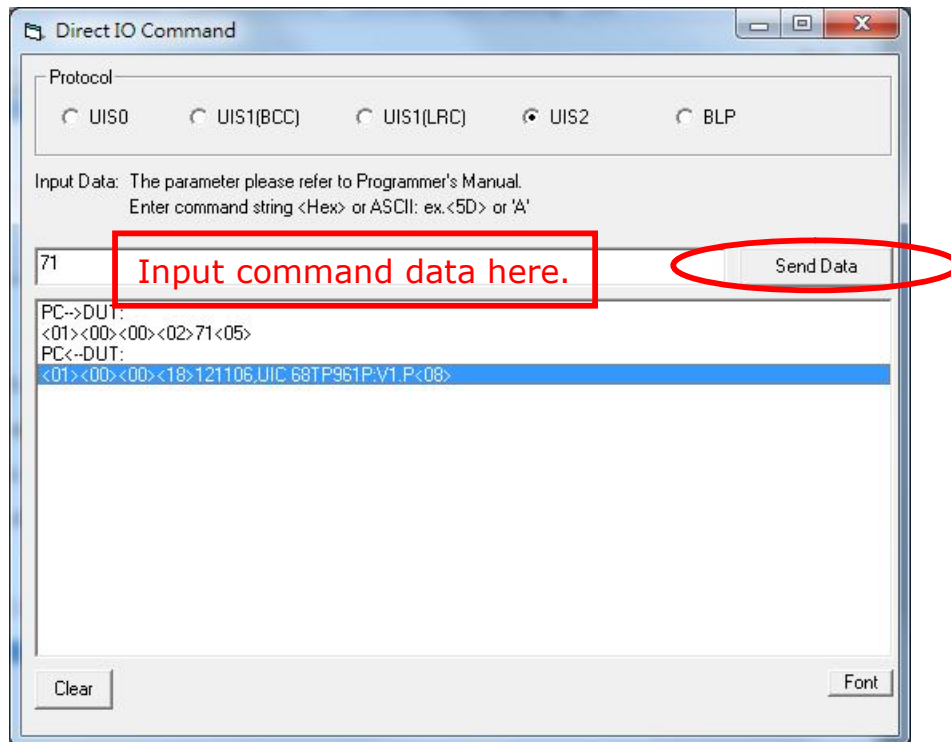
“121106,UIC 68TP961P:V1.P”

Direct IO

Step 1 Select data protocol. Status bar will be shown the data protocol.



Step 2 Key in command “71” and press “Send Data”.



PC-->DUT: <01><00><00><02>71<05>

Setting command	"71" copyright report
-----------------	-----------------------

PC<--DUT: <01><00><00><18>121106,UIC 68TP961P:V1.P<08>

Response result	"121106,UIC 68TP961P:V1.P"
-----------------	----------------------------