

8

THIS INFORMATION IS CONFIDENTIAL AND PROPRIETARY TO ELO TOUCH SOLUTIONS. IT MAY NOT BE DISCLOSED TO ANYONE OTHER THAN ELO TOUCH SOLUTIONS PERSONNEL WITHOUT AUTHORIZATION FROM ELO TOUCH SOLUTIONS (www.elotouch.com).

7

6

5

4

3

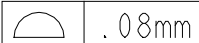
2

REVISIONS					
REV	ZONE	BY	DESCRIPTION	DATE	APPROVED
A		DN	INITIAL RELEASE PER CO-21-0996 (SAME AS REV 06)	06/03/21	
B		DN	UPDATE FOR I-SERIES 4.0 PER CO-21-1632 INCREASE SLOT SIZE ADD SERIAL NUMBER LABEL	09/21/21	

1

NOTES (UNLESS OTHERWISE SPECIFIED):

1. ALL MATERIAL AND COATINGS TO BE COMPLIANT WITH:
RoHS - EU DIRECTIVE 2011/65/EU
REACH - REGULATION (EC) NO 1907/2006
WEEE - DIRECTIVE 2012/19/EU ON WASTE ELECTRICAL AND ELECTRONIC EQUIPMENT

2. THE COMPUTER MODELS ARE BASIC (THEORETICALLY EXACT). THE PHYSICAL PARTS MUST LIE WITHIN  .08mm OF THE MODELS, EXCEPT WHERE NOTED.

3. INTERPRET DRAWING PER ASME STANDARD Y-14.5 - 2009

NOTES FOR INJECTION MOLDED PARTS (UNLESS OTHERWISE SPECIFIED):

4. MANUFACTURE PER ELO SPEC. ES600462.

5. LOCATE CAVITY IDENTIFICATION OF MULTI-CAVITY MOLDS AND DATE CODE PER WRITTEN AGREEMENT BY VENDOR AND ELO.

ASSEMBLE AS SHOWN, QTY 1 PER KIT

15-22_PS_EMV_PLATE_L
QTY. 1 PER KIT
(SEE SD608935)

15-22_PS_EDGE_BRACKET_22AND4
PLACE IN BAG LABELED "22 A4"
QTY. 1 PER KIT
(SEE SD608935)

15-22_PS_EDGE_BRACKET_15AND
PLACE IN BAG LABELED "15 A"
QTY. 1 PER KIT
(SEE SD608935)

15-22_PS_EDGE_BRACKET_15WIN2
PLACE IN BAG LABELED "15 W"
QTY. 1 PER KIT
(SEE SD609397)

15-22_PS_EDGE_BRACKET_22AND
PLACE IN BAG LABELED "22 A"
QTY. 1 PER KIT
(SEE SD608935)

15-22_PS_EDGE_BRACKET_22WIN2
PLACE IN BAG LABELED "22 W"
QTY. 1 PER KIT
(SEE SD609397)

HARDWARE TABLE					
DESCRIPTION	QTY	BAG LABEL			
SCREW, M3X8, PAN-HEAD, CROSS-RECESS	2	C			
SCREW, M4X10, PAN-HEAD, CROSS-RECESS	1	N			
SCREW, M4X5, PAN-HEAD, CROSS-RECESS	4	P			
SCREW, M4X6, FLAT-HEAD, CROSS-RECESS	4	R			
SCREW, M3X6, PAN-HEAD, CROSS-RECESS	2	Q			

ITEM NO.	QTY REQ'D	DRAWING OR PART NO.	DESCRIPTION	MATERIAL SPECIFICATION
PARTS LIST				
PART. NO.	UNLESS OTHERWISE SPECIFIED ALL DIMENSIONS ARE IN MILLIMETERS	DRAWN NOPPENBERGER	DATE 12/21/2020	TITLE
E906829		CHECK XXXX	DATE XX/XX/XXXX	MECH. DWGS., KIT, EMV BRACKET, P400
METRIC	TOLERANCES ARE: DECIMALS ±1/2° X = ± 0.50 .X = ± 0.25 .XX = ± 0.13	DESIGN NOPPENBERGER	DATE 12/21/2020	
DO NOT SCALE DRAWING				THIRD ANGLE PROJECTION
ProjE .prt17.asm: 15-22_PS_EMV_P400.ASM				SIZE D
ProjE .dwm: SD610690_P400.DRW				
SIZE	SCALE	SHEET	DWG. NO.	REV
D	0.750	1 OF 3	SD610690	B

DWG. NO. SD610690

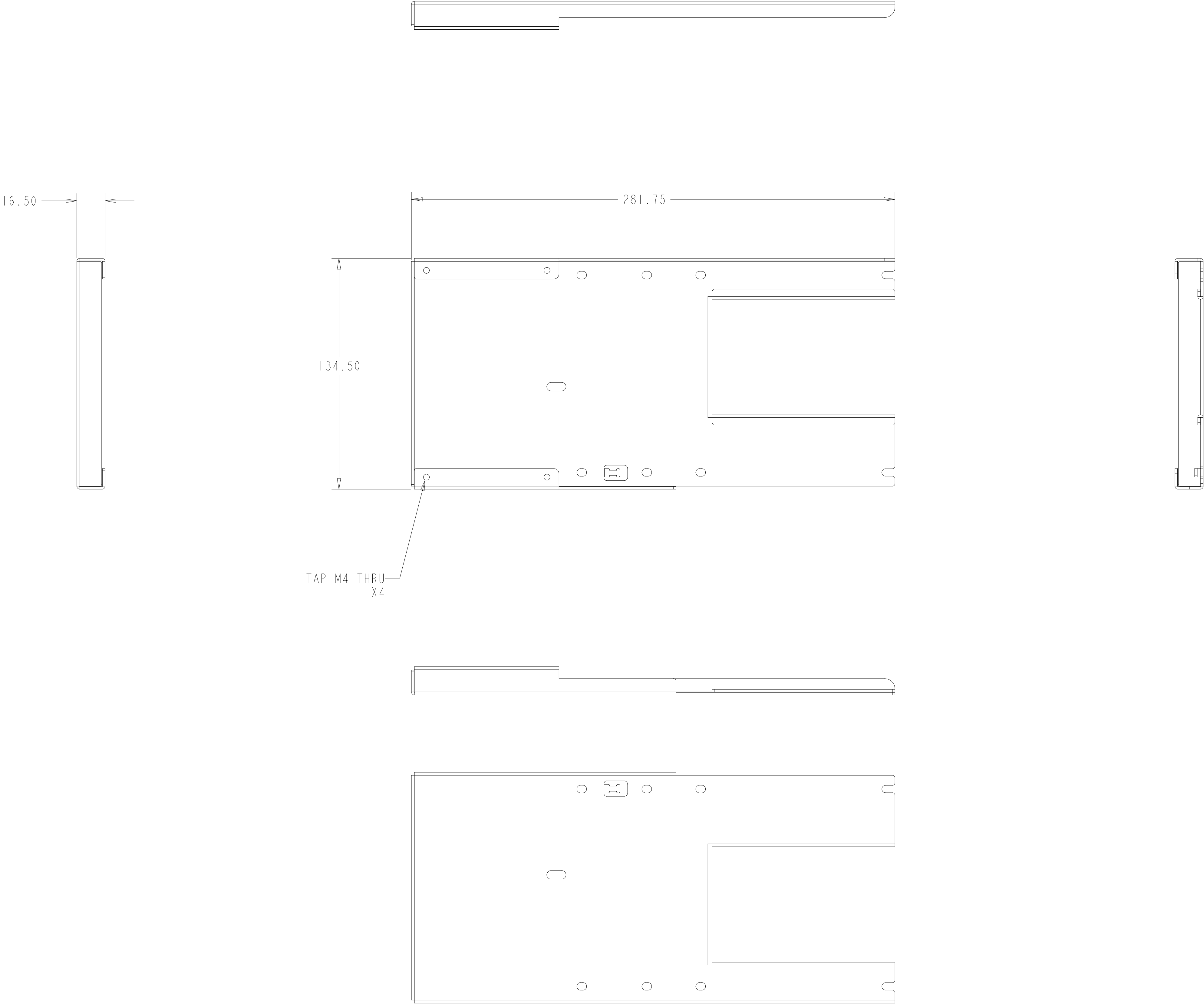
SHT. 1 OF 3


REV B

THIS INFORMATION IS CONFIDENTIAL AND PROPRIETARY TO ELO TOUCH SOLUTIONS. IT MAY NOT BE DISCLOSED TO ANYONE OTHER THAN ELO TOUCH SOLUTIONS PERSONNEL WITHOUT AUTHORIZATION FROM ELO TOUCH SOLUTIONS (www.elotouch.com).

15-22_PS EMV_ARM.P400.PRT

- NOTES:
- 1. MATERIAL: SPCC, T=1.50mm
 - 2. PAINT MATTE BLACK, LIGHT TEXTURE

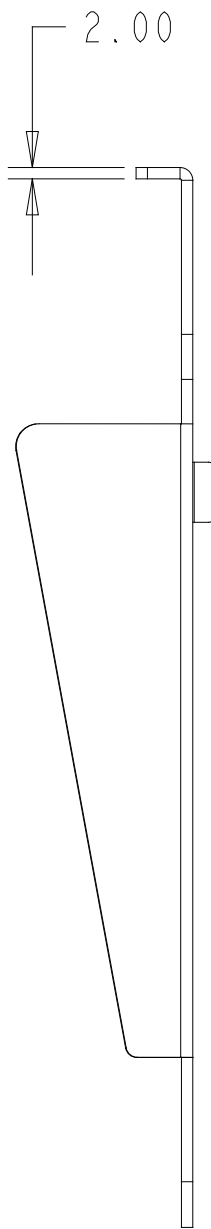
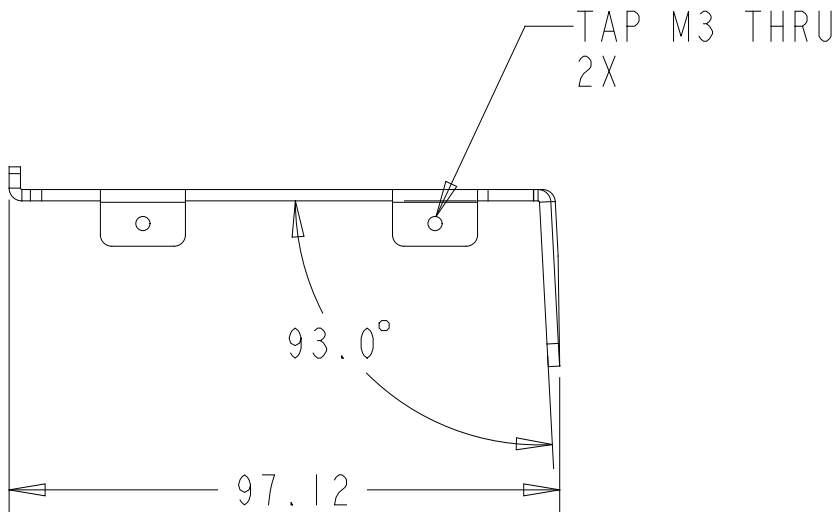


TITLE					DWG. NO.	SHEET	REV
MECH. DWGS., KIT, EMV BRACKET, P400							
SIZE	SCALE	2 OF 3	DWG. NO.				
D	0.750	2 OF 3	SD610690	B			

THIS INFORMATION IS CONFIDENTIAL AND PROPRIETARY TO ELO TOUCH SOLUTIONS. IT MAY NOT BE DISCLOSED TO ANYONE OTHER THAN ELO TOUCH SOLUTIONS PERSONNEL WITHOUT AUTHORIZATION FROM ELO TOUCH SOLUTIONS (www.elotouch.com).

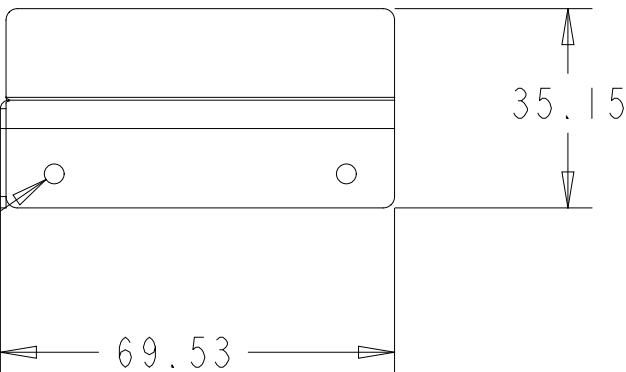
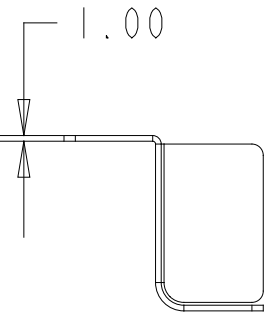
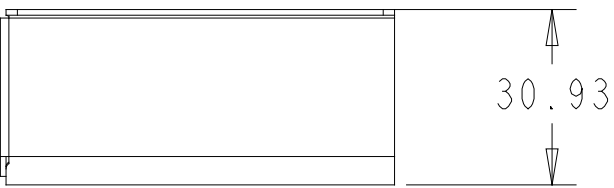
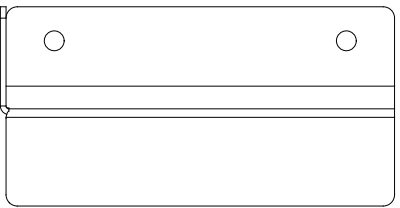
15-22_PS_EMV_P400.PRT

- NOTES:
- 1. MATERIAL: SPCC, T=2.0mm
 - 2. PAINT MATTE BLACK, LIGHT TEXTURE



15-22_PS_EMV_CABLE_COVER_P400.PRT

- NOTES:
- 1. MATERIAL: SPCC, T=1.0mm
 - 2. PAINT MATTE BLACK, LIGHT TEXTURE



TITLE
MECH. DWGS.,
KIT, EMV
BRACKET, P400



SIZE	SCALE	SHEET	DWG. NO.	REV
D	0.750	3 OF 3	SD610690	B

SD610690
DWG. NO.
SHT 3 OF 3
REV
B