

## Overview

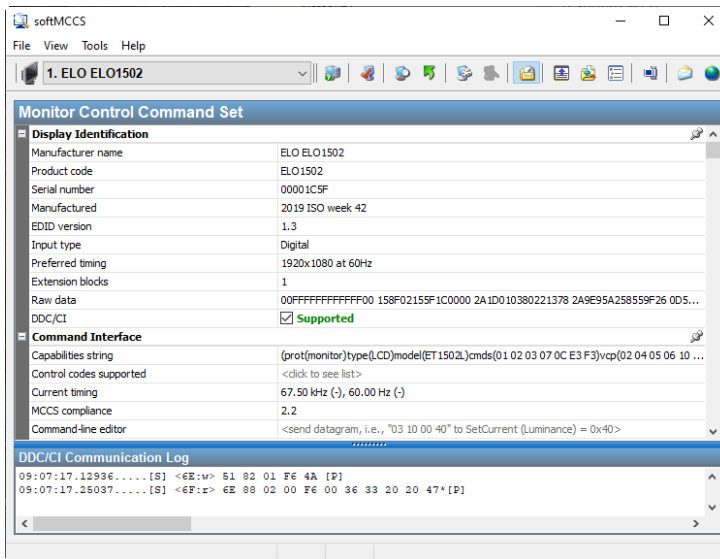
This procedure describes how to disable the Elo Logo (splash) on Elo monitors, via a DDCI/CI command using softMCCS utility.

## Hardware/Software Needed

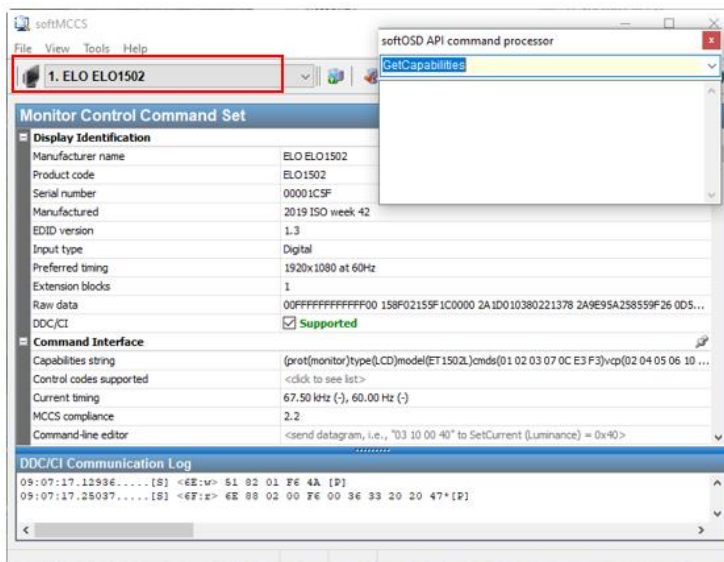
1. softMCCS utility: <https://www.entechtaiwan.com/lib/softmccs.shtm>
2. Elo monitor connected to a Windows pc with mouse and keyboard
  - Power cable
  - VGA or HDMI cable
  - USB touch cable

## Steps

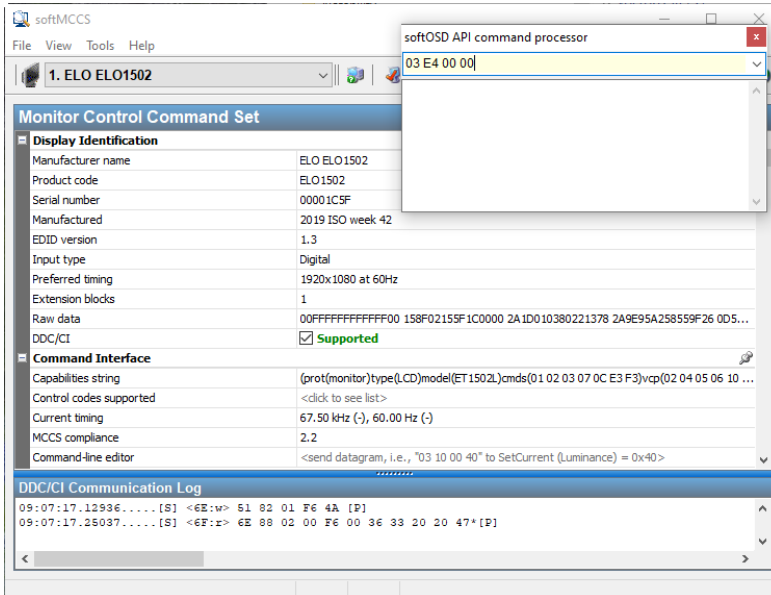
1. *Install* **softMCCS** and allow the program to **launch**.



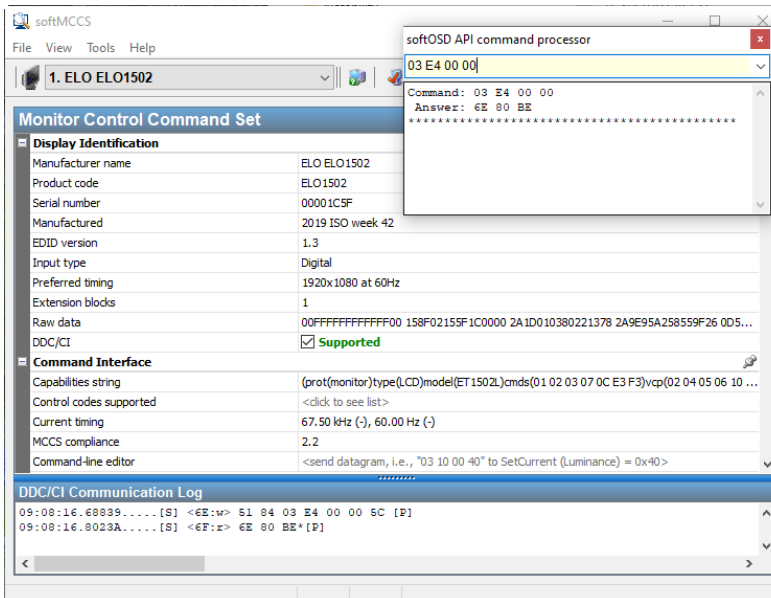
- a) *Choose "ELO1502" from the drop-down menu, then press F10 to open the "softOSD API command processor" window. (Alternatively, you can also choose to select "softOSD API command processor" from the Tools menu.)*



2. Type “03 E4 00 00” in the command processor entry field and *hit ENTER* on the **keyboard** to *send the command*. ( See below picture for your reference)



3. After command is sent you will receive an acknowledgement of “6E 80 BE” in the **Answer** section. (See below picture for reference)



4. You may now *exit softOSD* and *cycle power* to the monitor by *disconnecting the power cable* and *reconnecting*.
5. The Elo Logo should now be disabled and should no longer appear on start-up.
  - a) You can also verify it has been disabled by going into the Factory OSD mode. Follow the below steps.

- b) Turn the monitor **off** by *pressing* the **Power button**.
- c) Hold the **Select button** in and *press* the **Power button** in and allow monitor to turn back on.
- d) When video appears on the screen, *stop pressing* the **Select button**.
- e) Press the **Menu button** and you will see the OSD menu with a small letter “F” in the upper left corner.



- f) Using the **L or R arrow button**, *scroll to* the “F” and then *press* the **Select button** to enter the **Factory OSD Menu**.
- g) Status of **ELO LOGO** should now be **OFF**



- h) Using the **L or R arrow button**, *scroll to* the word **EXIT** and *press* the **Select button** to exit the **Factory OSD Menu**.