

Installing the APR Touch Technology Software (for Elo Computer Modules with Windows 7 and Windows XP)

Some software installation is required for the APR touchmonitor to work with the Computer Module. You will need to plug in an external mouse and/or keyboard into the Computer Module connector panel to execute these steps.

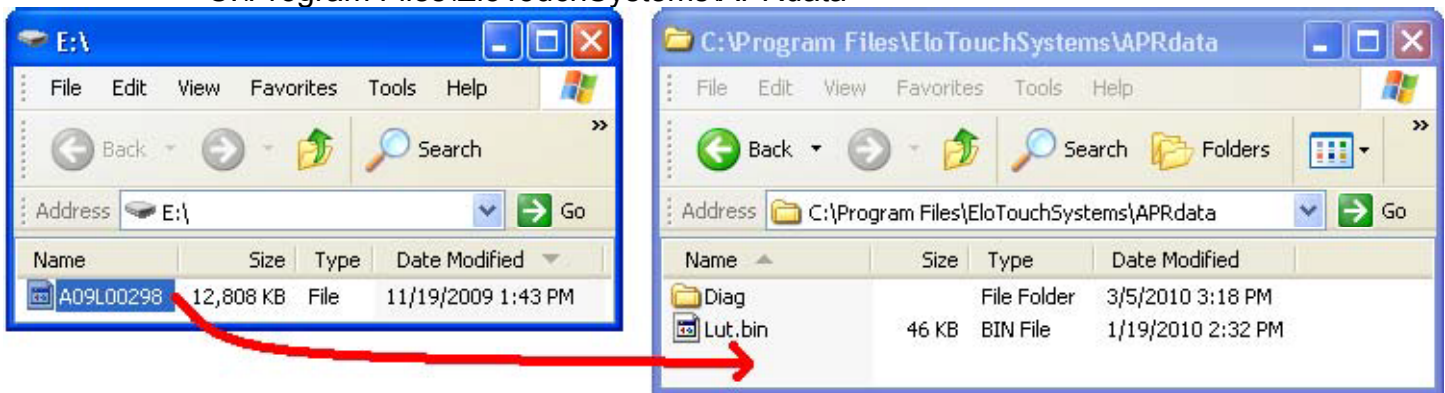
Visit the Elo TouchSystems website www.elotouch.com for:

- The latest touch driver versions
- Additional touch driver information
- Detailed touch driver installation guides
- Touch drivers for other operating systems

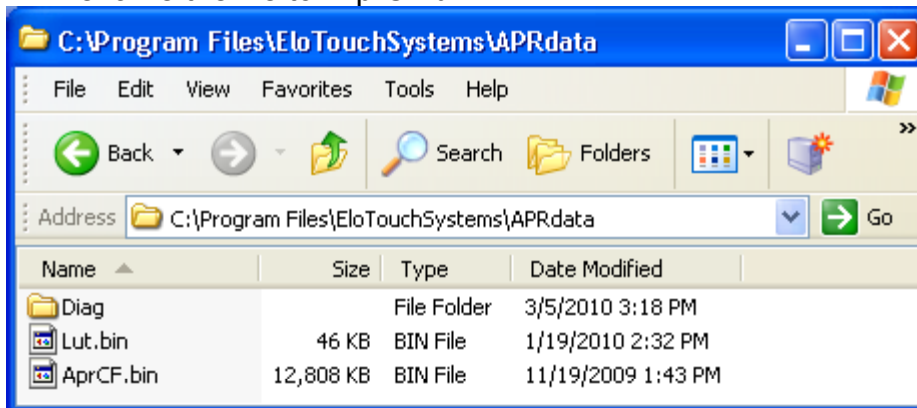
1. Install the APR Calibration file onto the Computer Module.

- Insert the touchmonitor's unique APR Calibration USB Drive into one of the Computer Module's USB ports.
- The APR Calibration USB Drive contains only one file. Copy this file into the Computer Module folder

"C:\Program Files\EloTouchSystems\APRdata"



- Rename the file to "AprCF.bin"



2. Reboot the Computer Module

Note:

Do not lose the touchmonitor's APR Calibration USB Drive or APR Calibration file! It is unique to your touchmonitor, and required for that touchmonitor to function.

If you connect this touchmonitor to a different computer, or if you update the touch driver on your computer, you will need to use the APR Calibration USB Drive again.

Operating System Setup – No OS

Load your desired operating system onto the Computer Module. The easiest way to do this will probably be using an image or recovery disk on a USB external DVD-ROM drive connected to the Computer Module.

Cancel any attempts by your operating system to load drivers for the new USB device (the Elo touchscreen) it finds.

Installing the APR Touch Software (for Elo Computer Modules with No OS)

Some software installation is required for your touchmonitor to work on the Computer Module.

Visit the Elo TouchSystems website www.elotouch.com for:

- The latest versions of our touch drivers
- Additional touch driver information
- Detailed touch driver installation guides
- Touch drivers for other operating systems

1. Install the driver onto your computer

- Obtain the necessary APR touch driver from the Elo Touchsystems website www.elotouch.com
- Follow the steps given by the Elo installation program.

2. Install the APR Calibration file onto your computer.

- Make sure the APR driver has been installed first.
- Insert the touchmonitor's unique APR Calibration USB Drive into one of the Computer Module's USB ports.
- The APR Calibration USB Drive contains only one file. Copy this file into the folder "C:\Program Files\EloTouchSystems\APRdata"
- Rename the file to "AprCF.bin"

Note:

Do not lose the touchmonitor's APR Calibration USB Drive or APR Calibration file! It is unique to your touchmonitor, and required for that touchmonitor to function.

If you need to connect this touchmonitor to a different computer, or if you need to update the touch driver on your computer, you will need this APR Calibration USB Drive again.